

SLCO6A1 antibody



Catalog Number: 115354

Product name

SLCO6A1 antibody

Specificity

Human, Mouse; other species not tested.

Antibody description

SLCO6A1 Rabbit Polyclonal antibody. Positive IHC detected in human lung cancer tissue. Positive WB detected in Jurkat cells, HEK-293 cells, mouse brain tissue, mouse testis tissue. Observed molecular weight by Western-blot: 73-80 kDa, 51 kDa

Preparation

This antibody was obtained by immunization of SLCO6A1 recombinant protein (Accession Number: NM_001289004). Purification method: Antigen affinity purified.

Formulation

PBS with 0.1% sodium azide and 50% glycerol pH 7.3.

Storage

Store at -20°C. DO NOT ALIQUOT

Clonality

Polyclonal

Ig Type

Rabbit IgG

Applications

ELISA, WB, IHC

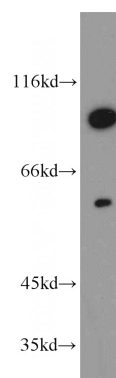
Dilutions

Recommended Dilution:

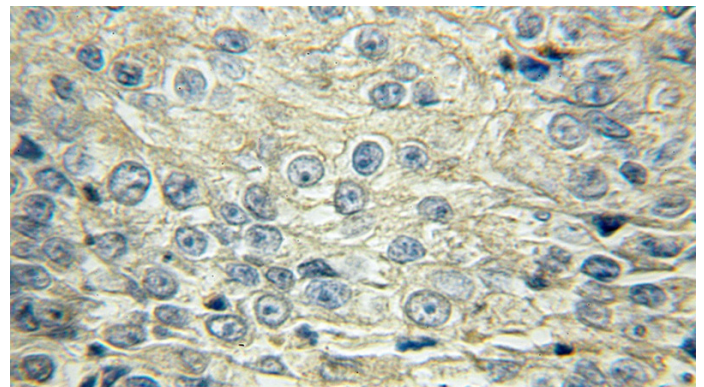
WB: 1:200-1:2000

IHC: 1:20-1:200

Validations



Jurkat cells were subjected to SDS PAGE followed by western blot with Catalog No:115354(SLCO6A1 antibody) at dilution of 1:500



Immunohistochemical of paraffin-embedded human lung cancer using Catalog No:115354(SLCO6A1 antibody) at dilution of 1:50 (under 10x lens)