

# LSR antibody



Catalog Number: 112354

## Product name

LSR antibody

## Specificity

Human,Rat, Mouse; other species not tested.

## Antibody description

LSR Rabbit Polyclonal antibody. Positive FC detected in HepG2 cells. Positive WB detected in rat liver tissue, L02 cells, mouse liver tissue. Observed molecular weight by Western-blot: 56 kDa, 68 kDa

## Preparation

This antibody was obtained by immunization of LSR recombinant protein (Accession Number: BC004381). Purification method: Antigen affinity purified.

## Formulation

PBS with 0.02% sodium azide and 50% glycerol pH 7.3.

## Storage

Store at -20°C. DO NOT ALIQUOT

## Clonality

Polyclonal

## Ig Type

Rabbit IgG

## Applications

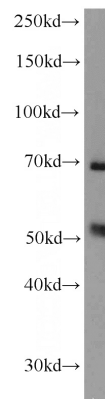
ELISA, WB, FC

## Dilutions

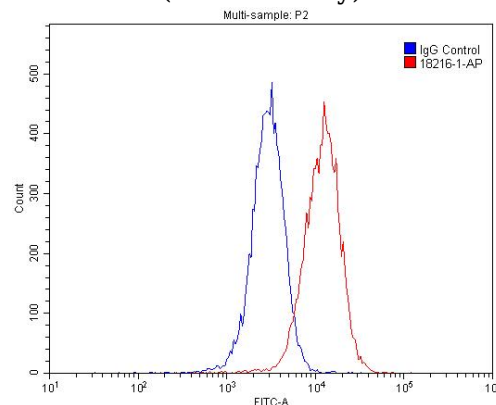
Recommended Dilution:

WB: 1:500-1:5000

## Validations



rat liver tissue were subjected to SDS PAGE followed by western blot with Catalog No:112354(LSR antibody) at dilution of 1:1000



1X10<sup>6</sup> HepG2 cells were stained with .2ug LSR antibody (Catalog No:112354, red) and control antibody (blue). Fixed with 4% PFA blocked with 3% BSA (30 min). Alexa Fluor 488-conjugated AffiniPure Goat Anti-Rabbit IgG(H+L) with dilution 1:1500.