

Mouse ESM1 (His Tag) recombinant protein



Catalog Number: 501354

General Information

Protein Construction

A DNA sequence encoding the mouse TLR2 (Q9QYY7) (Met1-Arg184) was fused with a polyhistidine tag at the C-terminus.

Organism

Mouse

Expression Host

Baculovirus-Insect Cells

QC Testing

Purity

> 95 % as determined by SDS-PAGE

Endotoxin

< 1.0 EU per μg of the protein as determined by the LAL method

Stability

Samples are stable for up to twelve months from date of receipt at -70°C

Predicted N terminal

Ala 22

Molecular Mass

The recombinant mouse ESM1 consists of 173 amino acids and has a calculated molecular mass of 19.1 kDa. The recombinant protein migrates as an approximately 23 kDa band in SDS-PAGE under

reducing conditions.

Formulation

Lyophilized from sterile 20mM Tris, 500mM NaCl, pH 8.0, 10% gly

1. 5 % trehalose and mannitol are added as protectants before lyophilization.

2. Please contact us for any concerns or special requirements.

Usage Guide

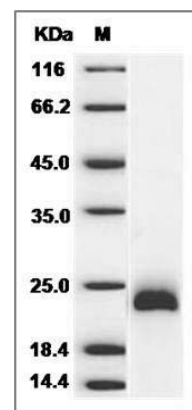
Storage

Store it under sterile conditions at -20°C to -80°C . It is recommended that the protein be aliquoted for optimal storage. Avoid repeated freeze-thaw cycles.

Reconstitution

Adding sterile water, prepare a stock solution of 0.25 mg/ml. Concentration is measured by UV-Vis.

SDS-PAGE



Mouse ESM1 / Endocan Protein (His Tag) SDS-PAGE