

# Anti-YY1 Rabbit antibody



Catalog Number: 168954

## Product name

Anti-YY1 Rabbit antibody

## Specificity

Human, Mouse, Rat

## Antibody description

YY1 Rabbit monoclonal antibody

## Preparation

Antigen: A synthetic peptide of human YY1

## Formulation

Supplied in 50nM Tris-Glycine(pH 7.4), 0.15M NaCl, 40%Glycerol, 0.01% sodium azide and 0.05% BSA.

## Storage

Store at 4°C short term. Aliquot and store at -20°C long term. Avoid freeze / thaw cycle.

## Clonality

Monoclonal

## Ig Type

Rabbit IgG

## Applications

WB, FC, IP

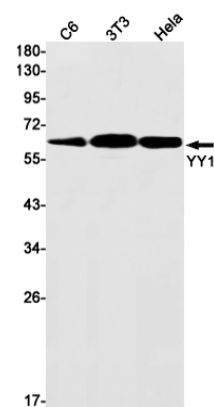
## Dilutions

WB: 1/2000

FC: 1/20

IP: 1/20

## Validations



Western blot detection of YY1 in C6,3T3,HeLa cell lysates using YY1 Rabbit mAb(1:1000 diluted).Predicted band size:45kDa.Observed band size:65kDa.