

General Information

Protein Construction

A DNA sequence encoding the human SERPINI2 (NP_006208.1) (Met 1-Leu 405) was expressed, with a polyhistidine tag at the C-terminus.

Organism

Human

Expression Host

Human Cells

QC Testing

Purity

> 90 % as determined by SDS-PAGE

Endotoxin

< 1.0 EU per μg of the protein as determined by the LAL method

Stability

Samples are stable for up to twelve months from date of receipt at -70°C

Predicted N terminal

Ser 19

Molecular Mass

The recombinant human SERPINI2 consists of 398 amino acids and predicts a molecular mass of 45.5 kDa. In SDS-PAGE under reducing

conditions, the apparent molecular mass of rhSERPINI2 is approximately 45-55 kDa due to glycosylation.

Formulation

Lyophilized from sterile PBS, pH 7.4

1. 5 % trehalose and mannitol are added as protectants before lyophilization.

2. Please contact us for any concerns or special requirements.

Usage Guide

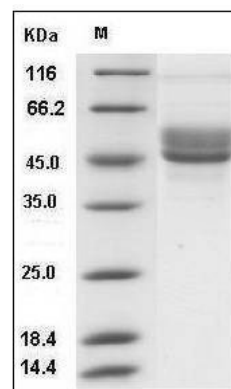
Storage

Store it under sterile conditions at -20°C to -80°C . It is recommended that the protein be aliquoted for optimal storage. Avoid repeated freeze-thaw cycles.

Reconstitution

Adding sterile water, prepare a stock solution of 0.25 mg/ml. Concentration is measured by UV-Vis.

SDS-PAGE



Human SerpinI2 Protein (His Tag) SDS-PAGE