

Mouse NOTCH1 (Fc Tag) recombinant protein



Catalog Number: 501554

General Information

Gene Name Synonym

Motch A; mT14; p300; Notch 1 extracellular truncation; Notch 1 intracellular domain

Protein Construction

A DNA sequence encoding the mouse Notch1 (NP_032740.3) (Met1-Gln526) was expressed with the Fc region of human IgG1 at the C-terminus.

Organism

Mouse

Expression Host

CHO Cells

QC Testing

Purity

> 90 % as determined by SDS-PAGE.

Endotoxin

< 1.0 EU per μ g protein as determined by the LAL method.

Stability

Samples are stable for up to twelve months from date of receipt at -70°C

Predicted N terminal

Ala 19

Molecular Mass

The recombinant mouse Notch1 consists 749 amino acids and predicts a molecular mass of 80.6 kDa.

Formulation

Lyophilized from sterile PBS, pH 7.4.

1. 5 % trehalose and mannitol are added as protectants before lyophilization.

2. Please contact us for any concerns or special requirements.

Usage Guide

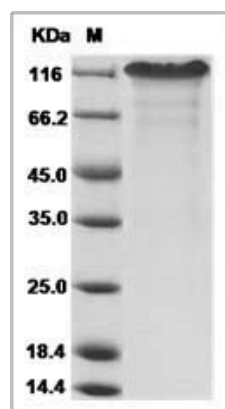
Storage

Store it under sterile conditions at -20°C to -80°C. It is recommended that the protein be aliquoted for optimal storage. Avoid repeated freeze-thaw cycles.

Reconstitution

Adding sterile water, prepare a stock solution of 0.25 mg/ml. Concentration is measured by UV-Vis.

SDS-PAGE



Mouse Notch-1 / NOTCH1 Protein (Fc Tag)