

# JMJD3 Polyclonal Antibody



Catalog Number: 166154

## Product name

Rabbit IgG

JMJD3 Polyclonal Antibody

## Applications

## Specificity

WB

Human, Mouse

## Dilutions

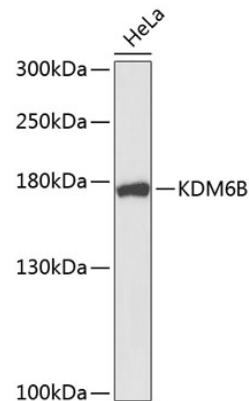
## Antibody description

WB 1:500 - 1:1000

Polyclonal antibody to JMJD3

## Validations

## Preparation



Antigen: A synthetic peptide of mouse KDM6B

## Formulation

PBS with 0.02% sodium azide, pH7.3.

## Storage

Store at 4°C. Avoid freeze / thaw cycles.

Western blot - JMJD3 Polyclonal Antibody

## Clonality

Western blot analysis of extracts of HeLa cells, using KDM6B antibody. Secondary antibody: HRP Goat Anti-Rabbit IgG (H+L) at 1:10000 dilution. Lysates/proteins: 25ug per lane. Blocking buffer: 3% nonfat dry milk in TBST.

Polyclonal

## Ig Type