

WDR1 antibody



Catalog Number: 116854

Product name

WDR1 antibody

IP: 1:200-1:2000

IHC: 1:20-1:200

Specificity

Human, Mouse, Rat; other species not tested.

Antibody description

WDR1 Rabbit Polyclonal antibody. Positive WB detected in rat skeletal muscle tissue, mouse skeletal muscle tissue. Positive IP detected in mouse skeletal muscle tissue. Positive IHC detected in human testis tissue. Observed molecular weight by Western-blot: 66-70 kDa

Preparation

This antibody was obtained by immunization of WDR1 recombinant protein (Accession Number: NM_005112). Purification method: Antigen affinity purified.

Formulation

PBS with 0.02% sodium azide and 50% glycerol pH 7.3.

Storage

Store at -20°C. DO NOT ALIQUOT

Clonality

Polyclonal

Ig Type

Rabbit IgG

Applications

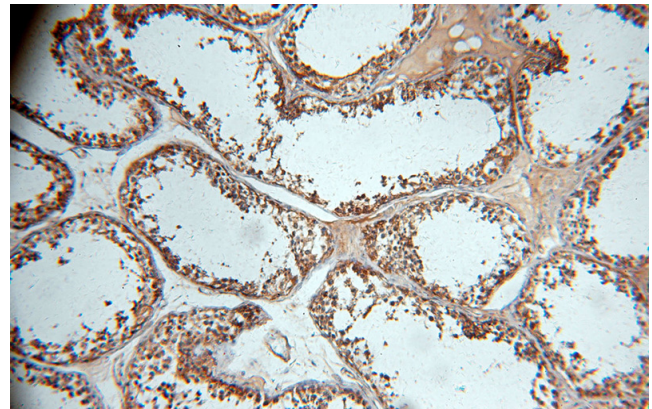
ELISA, IHC, IP, WB

Dilutions

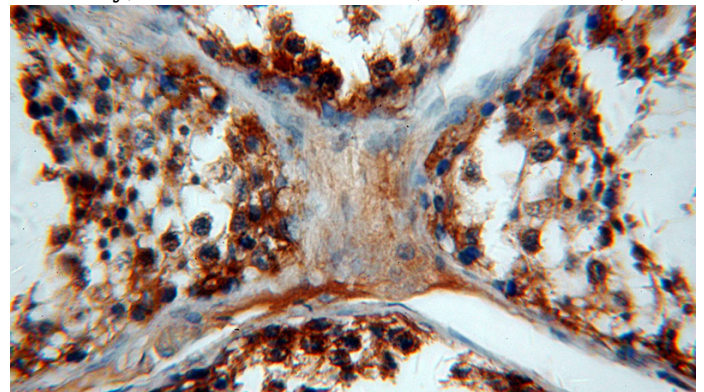
Recommended Dilution:

WB: 1:200-1:2000

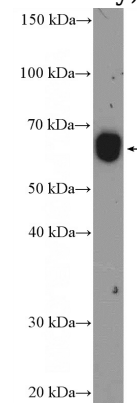
Validations



Immunohistochemical of paraffin-embedded human testis using Catalog No:116854(WDR1 antibody) at dilution of 1:100 (under 10x lens)



Immunohistochemical of paraffin-embedded human testis using Catalog No:116854(WDR1 antibody) at dilution of 1:100 (under 40x lens)



rat skeletal muscle tissue were subjected to SDS PAGE followed by western blot with Catalog

WDR1 antibody

Catalog Number: 116854

No:116854(WDR1 Antibody) at dilution of 1:600

IP Result of anti-WDR1 (IP:Catalog No:116854, 3ug; Detection:Catalog No:116854 1:500) with mouse skeletal muscle tissue lysate 3600ug.

