

RSU1 antibody

Catalog Number: 114854

Product name

RSU1 antibody

Specificity

Human, Mouse; other species not tested.

Antibody description

RSU1 Rabbit Polyclonal antibody. Positive WB detected in mouse placenta tissue, human bladder tissue. Positive IP detected in human placenta tissue. Observed molecular weight by Western-blot: 32 kDa

Preparation

This antibody was obtained by immunization of RSU1 recombinant protein (Accession Number: NM_012425). Purification method: Antigen affinity purified.

Formulation

PBS with 0.1% sodium azide and 50% glycerol pH 7.3.

Storage

Store at -20°C. DO NOT ALIQUOT

Clonality

Polyclonal

Ig Type

Rabbit IgG

Applications

ELISA, WB, IP

Dilutions

Recommended Dilution:

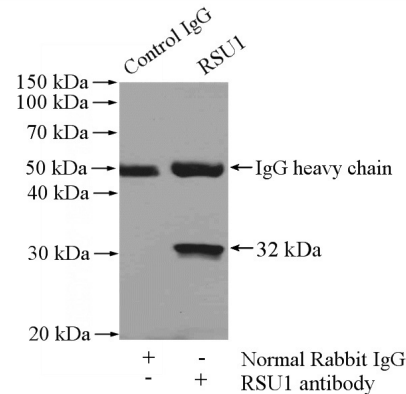
WB: 1:200-1:1000

IP: 1:200-1:1000

Validations



mouse placenta tissue were subjected to SDS PAGE followed by western blot with Catalog No:114854(RSU1 antibody) at dilution of 1:300



IP Result of anti-RSU1 (IP:Catalog No:114854, 4ug; Detection:Catalog No:114854 1:300) with human placenta tissue lysate 1520ug.