

Mouse ACE2 / Angiotensin-Converting Enzyme 2 (His & Fc Tag) recombinant protein



Catalog Number: 503854

General Information

Gene Name Synonym

ACE-related carboxypeptidase; Processed angiotensin-converting enzyme 2

Protein Construction

A DNA sequence encoding the mouse ACE2 isoform 1 (Q8R0I0-1) extracellular domain (Met 1-Thr 740) was fused with the C-terminal polyhistidine-tagged Fc region of human IgG1 at the C-terminus.

Organism

Mouse

Expression Host

Human Cells

QC Testing

Purity

> 95 % as determined by SDS-PAGE

Endotoxin

< 1.0 EU per μg of the protein as determined by the LAL method

Stability

Samples are stable for up to twelve months from date of receipt at -70°C

Predicted N terminal

Gln 18

Molecular Mass

The secreted recombinant mouse ACE2/Fc is a

disulfide-linked homodimer. The reduced monomer comprises 971 amino acids and has a predicted molecular mass of 112 kDa. As a result of glycosylation, it migrates as an approximately 130 kDa band in SDS-PAGE under reducing conditions.

Formulation

Lyophilized from sterile 20mM Tris, 150mM NaCl, 1mM ZnCl₂, pH 7.5

1. 5 % trehalose and mannitol are added as protectants before lyophilization.

2. Please contact us for any concerns or special requirements.

Usage Guide

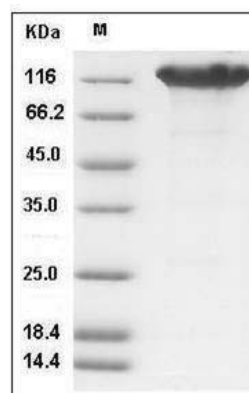
Storage

Store it under sterile conditions at -20°C to -80°C . It is recommended that the protein be aliquoted for optimal storage. Avoid repeated freeze-thaw cycles.

Reconstitution

Adding sterile water, prepare a stock solution of 0.25 mg/ml. Concentration is measured by UV-Vis.

SDS-PAGE



Mouse ACE2 / Angiotensin-Converting Enzyme 2 Protein (His & Fc Tag) SDS-PAGE