

Anti-LIN28A (2C1) Mouse antibody



Catalog Number: 168454

Product name

Anti-LIN28A (2C1) Mouse antibody

Specificity

Human, Mouse

Antibody description

LIN28A (2C1) Mouse monoclonal antibody

Preparation

Antigen: Purified recombinant human LIN28A protein fragments expressed in E.coli

Formulation

Purified mouse monoclonal in PBS(pH 7.4)containing with 0.02% sodium azide and 50% glycerol.

Storage

Store at 4°C short term. Store at -20°C long term. Avoid freeze / thaw cycle.

Clonality

Monoclonal

Ig Type

Mouse IgG2a

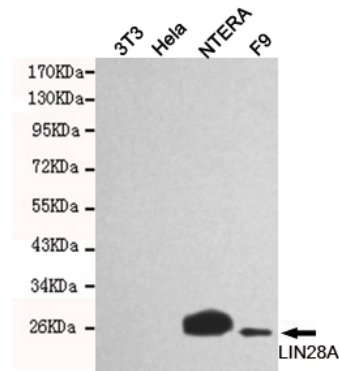
Applications

WB

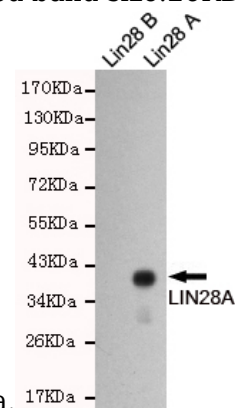
Dilutions

WB: 1/1000

Validations



Western blot detection of LIN28 in NTERA and F9 cell lysates using LIN28A mouse mAb (1:1000 diluted). Predicted band size:26KDa. Observed



band size:26KDa.

Western blot detection of LIN28A in LIN28B and LIN28A recombinant antigen fragments and using LIN28A mouse mAb (1:1000 diluted).