

## General Information

### Gene Name Synonym

T-cell receptor T3 delta chain

### Protein Construction

A DNA sequence encoding the extracellular domain (Met 1-Ala 105) of mouse CD3D (P04235) was fused with the C-terminal flag-tagged Fc region of human IgG1 at the C-terminus, constructed the plasmid 1; A DNA sequence encoding the extracellular domain (Met 1-Asp 108) of mouse CD3E (P22646) was fused with the C-terminal His-tagged Fc region of human IgG1 at the C-terminus, constructed the plasmid 2. The two plasmids were co-expressed and the mouse CD3D/CD3E heterodimer was purified.

### Organism

Mouse

### Expression Host

Human Cells

## QC Testing

### Purity

> 90 % as determined by SDS-PAGE

### Endotoxin

< 1.0 EU per  $\mu\text{g}$  of the protein as determined by the LAL method

### Stability

Samples are stable for up to twelve months from date of receipt at  $-70^{\circ}\text{C}$

### Predicted N terminal

Phe 22 & Asp 22

### Molecular Mass

The recombinant heterodimer of mouse CD3D/CD3E comprises 670 (333+337) amino acids and has a calculated molecular mass of 76 (38+38) kDa. As a result of glycosylation, the apparent molecular mass of mouse CD3D/CD3E heterodimer is approximately 45-50 kDa in SDS-PAGE under reducing conditions.

### Formulation

Lyophilized from sterile PBS, pH 7.4

1. 5 % trehalose and mannitol are added as protectants before lyophilization.

2. Please contact us for any concerns or special requirements.

## Usage Guide

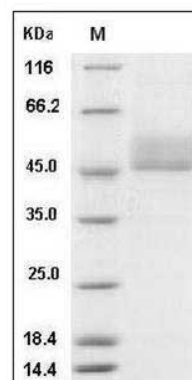
### Storage

Store it under sterile conditions at  $-20^{\circ}\text{C}$  to  $-80^{\circ}\text{C}$ . It is recommended that the protein be aliquoted for optimal storage. Avoid repeated freeze-thaw cycles.

### Reconstitution

Adding sterile water, prepare a stock solution of 0.25 mg/ml. Concentration is measured by UV-Vis.

### SDS-PAGE



Mouse CD3D & CD3E Heterodimer Protein SDS-PAGE