

CD146/MCAM antibody



Catalog Number: 109054

Product name

CD146/MCAM antibody

Specificity

Human, Mouse, Rat; other species not tested.

Antibody description

CD146/MCAM Rabbit Polyclonal antibody. Positive WB detected in A375 cells, HEK-293 cells, HeLa cells. Positive IP detected in HeLa cells, HepG2 cells. Positive IHC detected in human spleen tissue, human brain tissue, human heart tissue, human kidney tissue, human lung tissue, human ovary tissue, human ovary tumor tissue, human placenta tissue, human testis tissue. Observed molecular weight by Western-blot: 113-120 kDa

Preparation

This antibody was obtained by immunization of CD146/MCAM recombinant protein (Accession Number: NM_006500). Purification method: Antigen affinity purified.

Formulation

PBS with 0.02% sodium azide and 50% glycerol pH 7.3.

Storage

Store at -20°C. DO NOT ALIQUOT

Clonality

Polyclonal

Ig Type

Rabbit IgG

Applications

ELISA, IHC, WB, IP

Dilutions

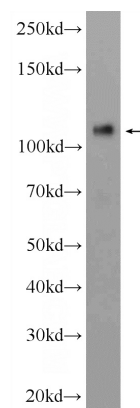
Recommended Dilution:

WB: 1:500-1:5000

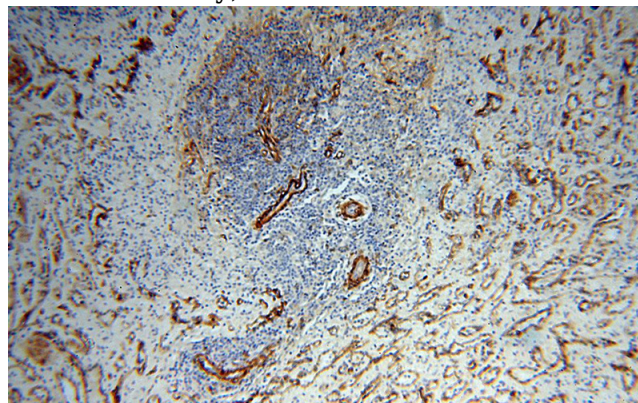
IP: 1:500-1:5000

IHC: 1:20-1:200

Validations



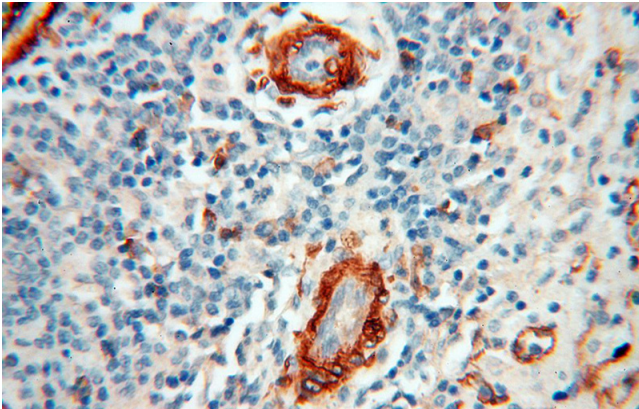
A375 cells were subjected to SDS PAGE followed by western blot with Catalog No:109054(CD146, MCAM Antibody) at dilution of 1:1000



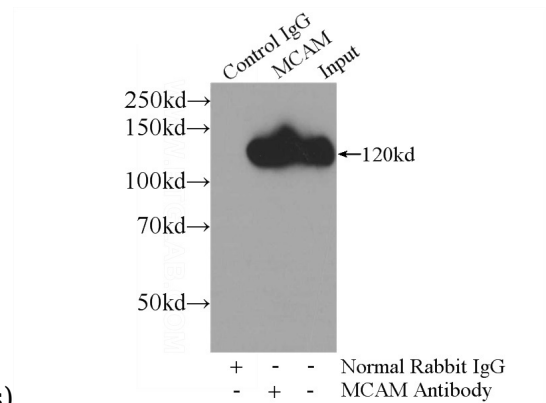
Immunohistochemical of paraffin-embedded human spleen using Catalog No:109054(CD146, MCAM antibody) at dilution of 1:100 (under 10x lens)

CD146/MCAM antibody

Catalog Number: 109054



Immunohistochemical of paraffin-embedded human spleen using Catalog No:109054(CD146, MCAM antibody) at dilution of 1:100 (under 40x



lens)

IP Result of anti-CD146, MCAM (IP:Catalog No:109054, 4ug; Detection:Catalog No:109054 1:1500) with HeLa cells lysate 4000ug.