

Anti-MHC class I Rabbit antibody



Catalog Number: 167744

Product name

Rabbit IgG

Anti-MHC class I Rabbit antibody

Applications

Specificity

WB, IHC-P, ICC/IF, FC

Human

Dilutions

Antibody description

WB: 1/500-1/2000

MHC class I Rabbit monoclonal antibody

IHC: 1/50-1/200

Preparation

ICC/IF: 1/50-1/200

Antigen: A synthesized peptide derived from human MHC class I

FC: 1/50

Validations

Formulation

Rabbit IgG in phosphate buffered saline , pH 7.4, 150mM NaCl, 0.02% sodium azide and 50% glycerol.

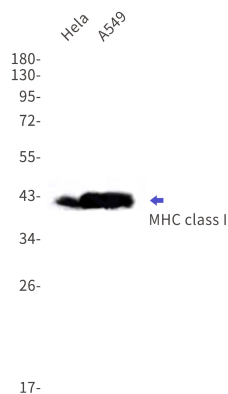
Storage

Store at 4°C short term. Store at -20°C long term. Avoid freeze / thaw cycle.

Clonality

Monoclonal

Ig Type



Western blot detection of MHC class I in HeLa,A549 cell lysates using MHC class I Rabbit mAb(1:1000 diluted).Observed band size:41kDa.