

# SUPV3L1 antibody

Catalog Number: 115744

## Product name

SUPV3L1 antibody

IP: 1:200-1:1000

IF: 1:50-1:500

## Specificity

Human, Mouse, Rat; other species not tested.

## Antibody description

SUPV3L1 Rabbit Polyclonal antibody. Positive IF detected in HeLa cells. Positive WB detected in PC-3 cells, HeLa cells. Positive IP detected in HeLa cells. Observed molecular weight by Western-blot: 70-80 kDa

## Preparation

This antibody was obtained by immunization of SUPV3L1 recombinant protein (Accession Number: NM\_003171). Purification method: Antigen affinity purified.

## Formulation

PBS with 0.1% sodium azide and 50% glycerol pH 7.3.

## Storage

Store at -20°C. DO NOT ALIQUOT

## Clonality

Polyclonal

## Ig Type

Rabbit IgG

## Applications

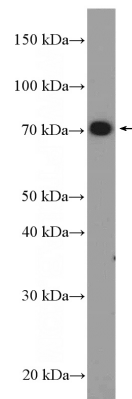
ELISA, IP, WB, IF

## Dilutions

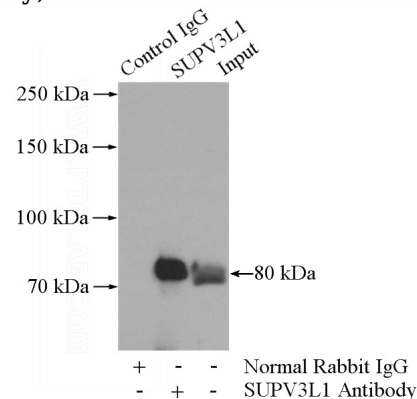
Recommended Dilution:

WB: 1:200-1:1000

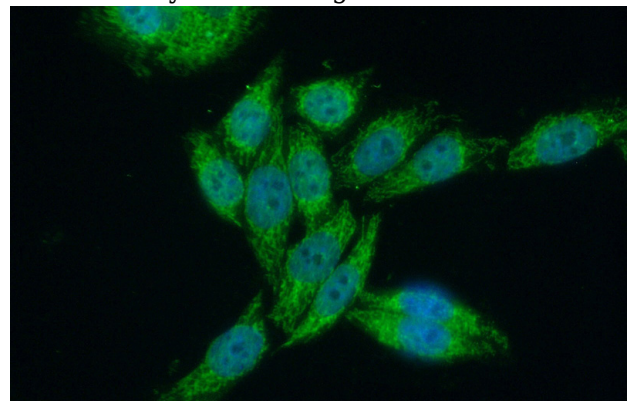
## Validations



PC-3 cells were subjected to SDS PAGE followed by western blot with Catalog No:115744(SUPV3L1 Antibody) at dilution of 1:300



IP Result of anti-SUPV3L1 (IP:Catalog No:115744, 4ug; Detection:Catalog No:115744 1:300) with HeLa cells lysate 1200ug.



Immunofluorescent analysis of (10% Formaldehyde) fixed HeLa cells using Catalog

# SUPV3L1 antibody



Catalog Number: 115744

---

No:115744(SUPV3L1 Antibody) at dilution of 1:50 and Alexa Fluor 488-conjugated AffiniPure Goat Anti-Rabbit IgG(H+L)