

CLCA2 antibody

Catalog Number: 109344

Product name

CLCA2 antibody

Specificity

Human, Mouse; other species not tested.

Antibody description

CLCA2 Rabbit Polyclonal antibody. Positive IHC detected in human oesophagus tissue. Positive WB detected in mouse lung tissue, COLO 320 cells. Observed molecular weight by Western-blot: 141 kDa, 35-40 kDa

Preparation

This antibody was obtained by immunization of CLCA2 recombinant protein (Accession Number: NM_006536). Purification method: Antigen affinity purified.

Formulation

PBS with 0.02% sodium azide and 50% glycerol pH 7.3.

Storage

Store at -20°C. DO NOT ALIQUOT

Clonality

Polyclonal

Ig Type

Rabbit IgG

Applications

ELISA, WB, IHC

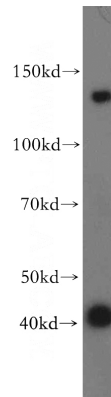
Dilutions

Recommended Dilution:

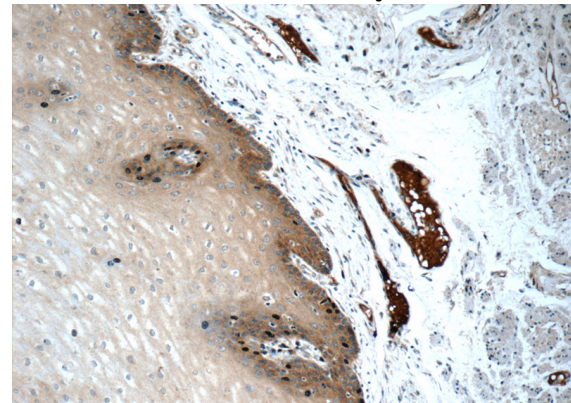
WB: 1:200-1:2000

IHC: 1:20-1:200

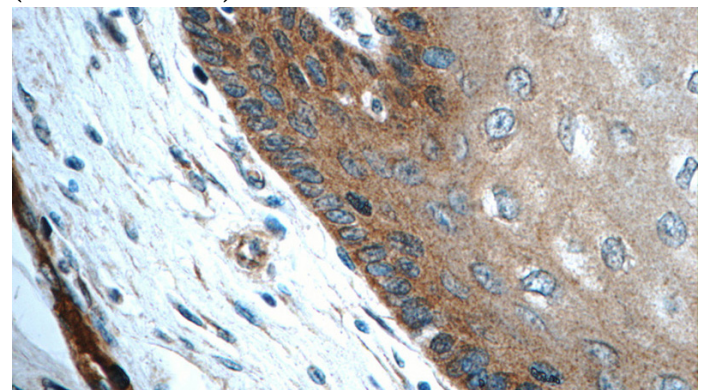
Validations



mouse lung tissue were subjected to SDS PAGE followed by western blot with Catalog No:109344(CLCA2 antibody) at dilution of 1:300



Immunohistochemistry of paraffin-embedded human oesophagus tissue slide using Catalog No:109344(CLCA2 Antibody) at dilution of 1:50 (under 10x lens)



Immunohistochemistry of paraffin-embedded human oesophagus tissue slide using Catalog No:109344(CLCA2 Antibody) at dilution of 1:50

CLCA2 antibody



Catalog Number: 109344

(under 40x lens)