

# Anti-phospho-E Cadherin (Ser838/Ser840) Rabbit antibody



Catalog Number: 167644

## Product name

Anti-phospho-E Cadherin (Ser838/Ser840) Rabbit antibody

## Specificity

Human, Mouse, Rat

## Antibody description

phospho-E Cadherin (Ser838/Ser840) Rabbit monoclonal antibody

## Preparation

Antigen: A synthetic phosphopeptide corresponding to residues surrounding Ser838/Ser840 of human E Cadherin

## Formulation

50nM Tris-Glycine(pH 7.4), 0.15M NaCl, 40%Glycerol, 0.01% sodium azide and 0.05% BSA

## Storage

Store at 4°C short term. Store at -20°C long term. Avoid freeze / thaw cycle.

## Clonality

Monoclonal

## Ig Type

Rabbit IgG

## Applications

WB, IHC-P, IP

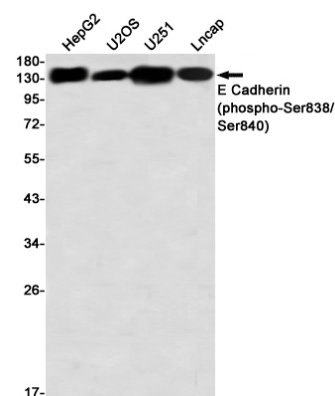
## Dilutions

WB: 1/2000-1/10000

IHC: 1/20

IP: 1/20

## Validations



Western blot detection of E Cadherin (phospho-Ser838/Ser840) in HepG2,U2OS,U251,Lncap using E Cadherin (phospho-Ser838/Ser840) Rabbit mAb(1:1000 diluted)