

# ASAH2 Polyclonal Antibody



Catalog Number: 165644

## Product name

ASAH2 Polyclonal Antibody

## Specificity

Human, Mouse, Rat

## Antibody description

Polyclonal antibody to ASAH2

## Preparation

Antigen: Recombinant protein of human ASAH2

## Formulation

PBS with 0.02% sodium azide, 50% glycerol, pH7.3.

## Storage

Store at -20°C. Avoid freeze / thaw cycles.

## Clonality

Polyclonal

## Ig Type

Rabbit IgG

## Applications

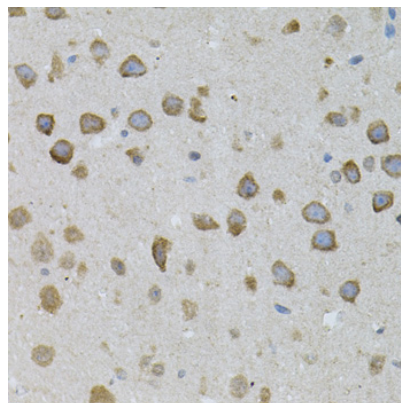
WB, IHC

## Dilutions

WB 1:1000 - 1:2000

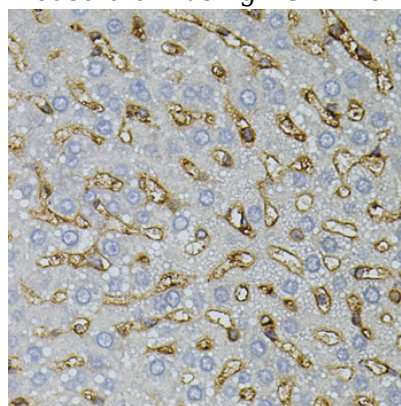
IHC 1:100 - 1:200

## Validations



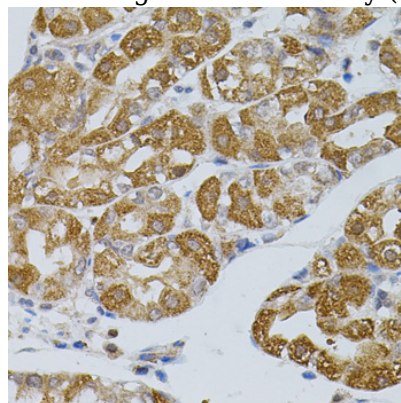
Immunohistochemistry - ASAH2 Polyclonal Antibody

Immunohistochemistry of paraffin-embedded mouse brain using ASAH2 antibody (40x lens).



Immunohistochemistry - ASAH2 Polyclonal Antibody

Immunohistochemistry of paraffin-embedded rat liver using ASAH2 antibody (40x lens).



Immunohistochemistry - ASAH2 Polyclonal Antibody

Immunohistochemistry of paraffin-embedded

# ASAH2 Polyclonal Antibody



Catalog Number: 165644

---

human stomach using ASAH2 antibody (40x lens).