

Human MDH1/MDHA (His tag) recombinant protein



Catalog Number: 519244

General Information

Gene Name Synonym

Malate Dehydrogenase Cytoplasmic, Cytosolic
Malate Dehydrogenase, Diiodophenylpyruvate
Reductase, MDH1, MDHA

Protein Construction

A DNA sequence encoding the Human
MDH1/MDHA Ser2-Ala334 is expressed with a
6His tag at the C-terminus.

Organism

Human

Expression Host

E. coli

QC Testing

Purity

>95% as determined by SDS-PAGE.

Endotoxin

<1.0 EU per µg protein as determined by the LAL

method.

Stability

Store for up to 6 months at -20°C

Formulation

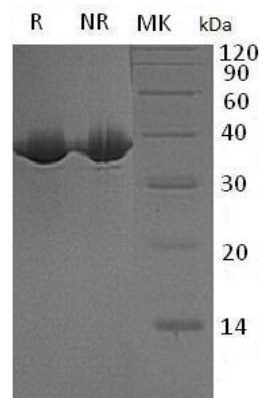
Supplied as a 0.2 µm filtered solution of 20mM
Tris, 150mM NaCl, pH 8.0.

Usage Guide

Storage

Store at <-20°C, minimize freeze-thaw cycles.

SDS-PAGE



Human MDH1/MDHA (His tag) recombinant
protein