

# KIAA1456 Polyclonal Antibody



Catalog Number: 165244

## Product name

KIAA1456 Polyclonal Antibody

## Specificity

Human, Mouse, Rat

## Antibody description

Polyclonal antibody to KIAA1456

## Preparation

Antigen: Recombinant fusion protein containing a sequence corresponding to amino acids 110-330 of human KIAA1456 (NP\_065895.2).

## Formulation

PBS with 0.02% sodium azide, 50% glycerol, pH7.3.

## Storage

Store at -20°C. Avoid freeze / thaw cycles.

## Clonality

Polyclonal

## Ig Type

Rabbit IgG

## Applications

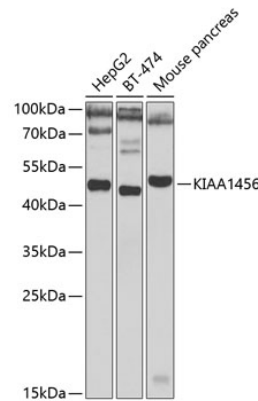
WB, IHC

## Dilutions

WB 1:500 - 1:2000

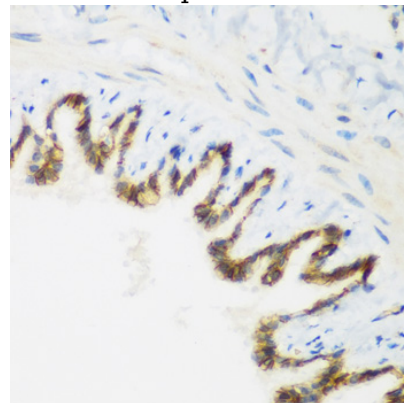
IHC 1:50 - 1:200

## Validations



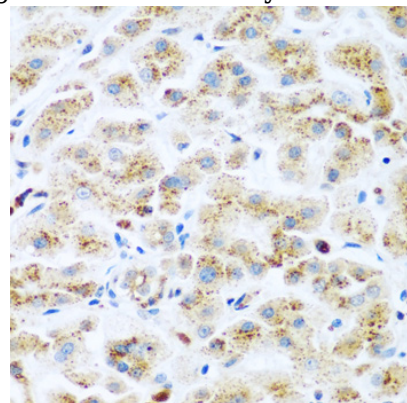
Western blot - KIAA1456 Polyclonal Antibody

Western blot analysis of extracts of various cell lines, using KIAA1456 antibody at 1:1000 dilution. Secondary antibody: HRP Goat Anti-Rabbit IgG (H+L) at 1:10000 dilution. Lysates/proteins: 25ug per lane. Blocking buffer: 3% nonfat dry milk in TBST. Detection: ECL Basic Kit. Exposure time: 60s.



Immunohistochemistry - KIAA1456 Polyclonal Antibody

Immunohistochemistry of paraffin-embedded rat lung using KIAA1456 antibody at dilution of 1:200



(40x lens).

# KIAA1456 Polyclonal Antibody

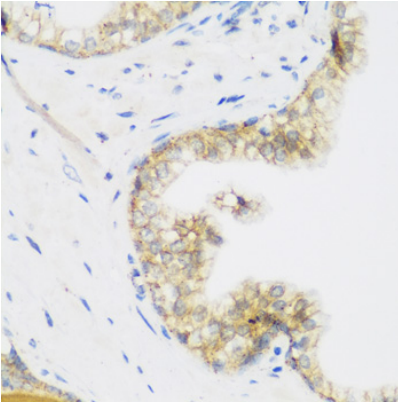


Catalog Number: 165244

---

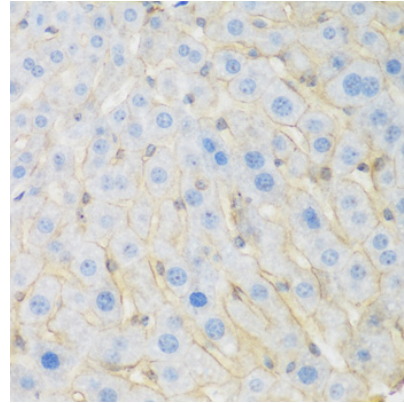
## Immunohistochemistry - KIAA1456 Polyclonal Antibody

Immunohistochemistry of paraffin-embedded human liver cancer using KIAA1456 antibody at dilution of 1:200 (40x lens).



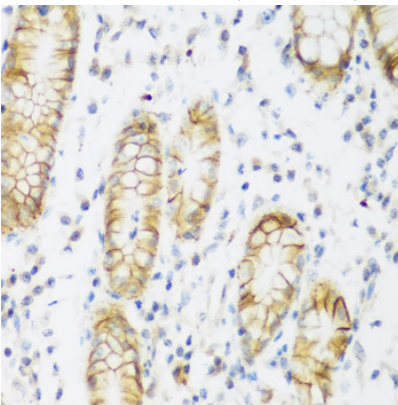
## Immunohistochemistry - KIAA1456 Polyclonal Antibody

Immunohistochemistry of paraffin-embedded human stomach using KIAA1456 antibody at dilution of 1:200 (40x lens).



## Immunohistochemistry - KIAA1456 Polyclonal Antibody

Immunohistochemistry of paraffin-embedded human prostate using KIAA1456 antibody at dilution of 1:200 (40x lens).



## Immunohistochemistry - KIAA1456 Polyclonal Antibody

Immunohistochemistry of paraffin-embedded mouse liver using KIAA1456 antibody at dilution of 1:200 (40x lens).