

# SMAD9 Polyclonal Antibody



Catalog Number: 164244

## Product name

SMAD9 Polyclonal Antibody

## Specificity

Human

## Antibody description

Polyclonal antibody to SMAD9

## Preparation

Antigen: A synthetic peptide of human SMAD9

## Formulation

PBS with 0.02% sodium azide, pH7.3.

## Storage

Store at 4°C. Avoid freeze / thaw cycles.

## Clonality

Polyclonal

## Ig Type

Rabbit IgG

## Applications

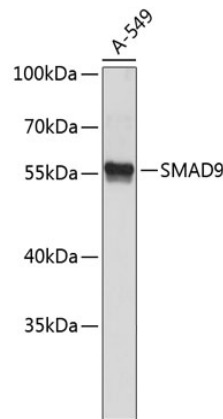
WB, IF

## Dilutions

WB 1:500 - 1:1000

IF 1:20 - 1:50

## Validations



Western blot - SMAD9 Polyclonal Antibody

Western blot analysis of extracts of A-549 cells, using SMAD9 antibody. Secondary antibody: HRP Goat Anti-Rabbit IgG (H+L) at 1:10000 dilution. Lysates/proteins: 25ug per lane. Blocking buffer: 3% nonfat dry milk in TBST.