

# Mouse PSMA / FOLH1 (His Tag) recombinant protein



Catalog Number: 502244

## General Information

### Gene Name Synonym

Folate hydrolase 1; Folylpoly-gamma-glutamate carboxypeptidase; Glutamate carboxypeptidase II; Membrane glutamate carboxypeptidase; N-acetylated-alpha-linked acidic dipeptidase I; Prostate-specific membrane antigen homolog; Pteroylpoly-gamma-glutamate carboxypeptidase

### Protein Construction

A DNA sequence encoding the mouse FOLH1 (NP\_058050.3) extracellular domain (Ile 44-Ala 752) was expressed, fused with a polyhistidine tag at the N-terminus.

### Organism

Mouse

### Expression Host

Human Cells

## QC Testing

### Purity

> 88 % as determined by SDS-PAGE

### Endotoxin

< 1.0 EU per  $\mu\text{g}$  of the protein as determined by the LAL method

### Stability

Samples are stable for up to twelve months from date of receipt at  $-70^{\circ}\text{C}$

### Predicted N terminal

His

### Molecular Mass

The recombinant mouse FOLH1 consists of 725 amino acids and has a calculated molecular mass of 81.8 kDa. As a result of glycosylation, the recombinant protein migrates as an approximately 100-110 kDa band in SDS-PAGE under reducing conditions.

### Formulation

Lyophilized from sterile PBS, pH 7.4

1. 5 % trehalose and mannitol are added as protectants before lyophilization.

2. Please contact us for any concerns or special requirements.

## Usage Guide

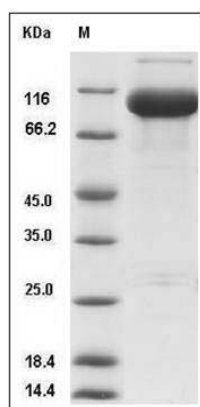
### Storage

Store it under sterile conditions at  $-20^{\circ}\text{C}$  to  $-80^{\circ}\text{C}$ . It is recommended that the protein be aliquoted for optimal storage. Avoid repeated freeze-thaw cycles.

### Reconstitution

Adding sterile water, prepare a stock solution of 0.25 mg/ml. Concentration is measured by UV-Vis.

### SDS-PAGE



Mouse PSMA / FOLH1 Protein (His Tag) SDS-PAGE