

Anti-Renin antibody



Catalog Number: 102244

Product name

Anti-Renin antibody

Immunogen

[Mouse Renin \(His Tag\) recombinant protein](#)

Specificity

Mouse REN1 / Renin-1 / Angiotensinogenase

Antibody description

Rabbit polyclonal to Renin

Preparation

Produced in rabbits immunized with purified, recombinant Mouse REN1 (rM REN1; NP_112469.1; Met 1-Arg 402). REN1 specific IgG was purified by mouse REN1 affinity chromatography.

Formulation

0.2 µm filtered solution in PBS with 5% trehalose

Storage

This antibody can be stored at 2°C-8°C for one month without detectable loss of activity. Antibody products are stable for twelve months from date of receipt when stored at -20°C to -80°C.

Preservative-Free.

Sodium azide is recommended to avoid contamination (final concentration 0.05%-0.1%). It is toxic to cells and should be disposed of properly. Avoid repeated freeze-thaw cycles.

Clonality

Polyclonal

Ig Type

Rabbit IgG

Applications

ELISA, IHC-P

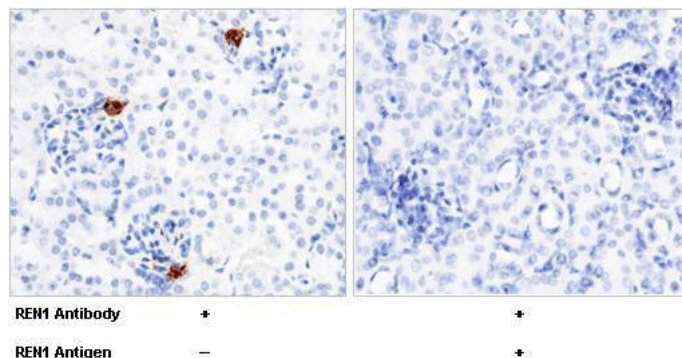
Dilutions

ELISA: 0.1-0.2 µg/mL

This antibody can be used at 0.1-0.2 µg/mL with the appropriate secondary reagents to detect Mouse REN1. The detection limit for Mouse REN1 is approximately 0.00975 ng/well.

IHC-P: 0.1-2 µg/mL

Validations



REN1 / Renin-1 Antibody, Rabbit PAb, Antigen Affinity Purified, Immunohistochemistry

Immunochemical staining of mouse REN1 in mouse kidney with rabbit polyclonal antibody (0.2 µg/mL, formalin-fixed paraffin embedded sections). Positive staining was localized to juxtaglomerular cell. The left panel: tissue incubated with primary antibody; The right panel: tissue incubated with the mixture of primary antibody and antigen (recombinant protein).