

ISYNA1 antibody



Catalog Number: 111944

Product name

ISYNA1 antibody

IHC: 1:20-1:200

IF: 1:20-1:200

Specificity

Human, Mouse, Rat; other species not tested.

Antibody description

ISYNA1 Rabbit Polyclonal antibody. Positive IF detected in HepG2 cells. Positive IHC detected in human pancreas cancer tissue. Positive WB detected in HepG2 cells. Observed molecular weight by Western-blot: 61kd

Preparation

This antibody was obtained by immunization of ISYNA1 recombinant protein (Accession Number: NM_016368). Purification method: Antigen affinity purified.

Formulation

PBS with 0.02% sodium azide and 50% glycerol pH 7.3.

Storage

Store at -20°C. DO NOT ALIQUOT

Clonality

Polyclonal

Ig Type

Rabbit IgG

Applications

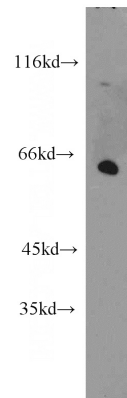
ELISA, WB, IHC, IF

Dilutions

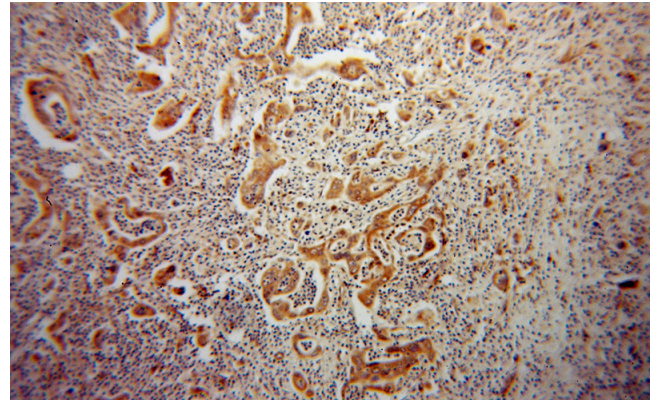
Recommended Dilution:

WB: 1:200-1:2000

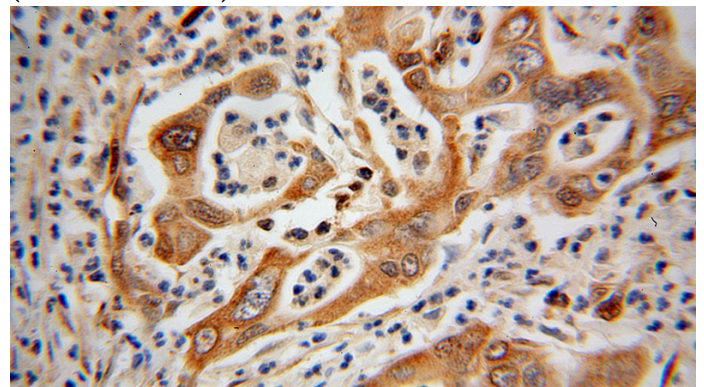
Validations



HepG2 cells were subjected to SDS PAGE followed by western blot with Catalog No:111944(ISYNA1 antibody) at dilution of 1:400



Immunohistochemical of paraffin-embedded human pancreas cancer using Catalog No:111944(ISYNA1 antibody) at dilution of 1:100 (under 10x lens)

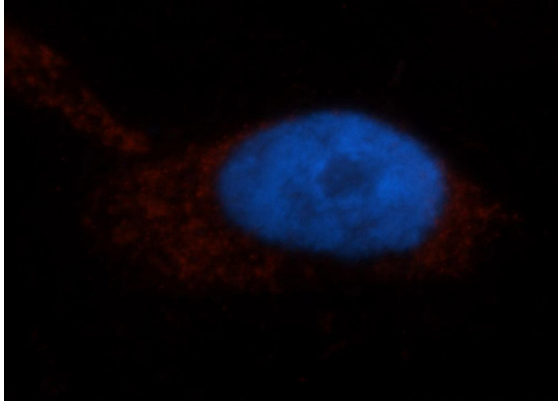


Immunohistochemical of paraffin-embedded

ISYNA1 antibody

Catalog Number: 111944

human pancreas cancer using Catalog No:111944(ISYNA1 antibody) at dilution of 1:100 (under 40x lens)



Immunofluorescent analysis of HepG2 cells, using ISYNA1 antibody Catalog No:111944 at 1:50 dilution and Rhodamine-labeled goat anti-rabbit IgG (red). Blue pseudocolor = DAPI (fluorescent DNA dye).