

# SPARCL1 antibody



Catalog Number: 115544

## Product name

SPARCL1 antibody

IP: 1:200-1:1000

IHC: 1:20-1:200

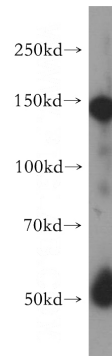
## Specificity

Human, Mouse, Rat; other species not tested.

## Validations

## Antibody description

SPARCL1 Rabbit Polyclonal antibody. Positive IHC detected in human gliomas tissue. Positive IP detected in Raji cells. Positive WB detected in human heart tissue. Observed molecular weight by Western-blot: 130-140 kDa



## Preparation

This antibody was obtained by immunization of SPARCL1 recombinant protein (Accession Number: NM\_004684). Purification method: Antigen affinity purified.

human heart tissue were subjected to SDS PAGE followed by western blot with Catalog No:115544(SPARCL1 antibody) at dilution of

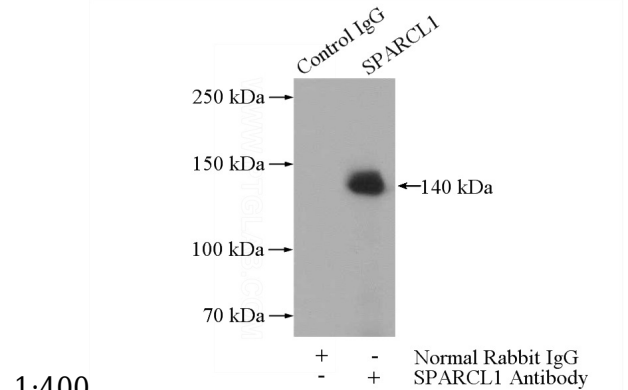
## Formulation

PBS with 0.02% sodium azide and 50% glycerol pH 7.3.

1:400

## Storage

Store at -20°C. DO NOT ALIQUOT



## Clonality

Polyclonal

1:400

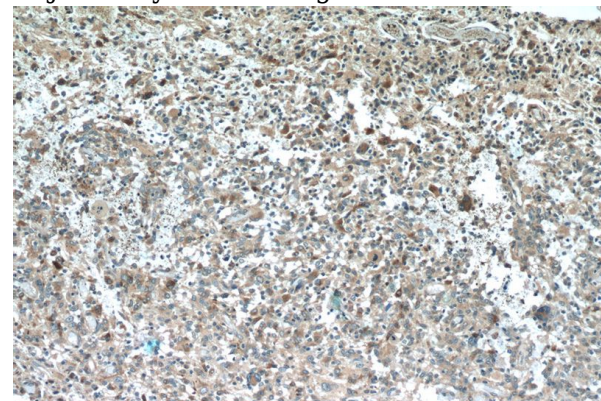
## Ig Type

Rabbit IgG

IP Result of anti-SPARCL1 (IP:Catalog No:115544, 4ug; Detection:Catalog No:115544 1:300) with Raji cells lysate 1440ug.

## Applications

ELISA, WB, IHC, IP



## Dilutions

Recommended Dilution:

Immunohistochemistry of paraffin-embedded

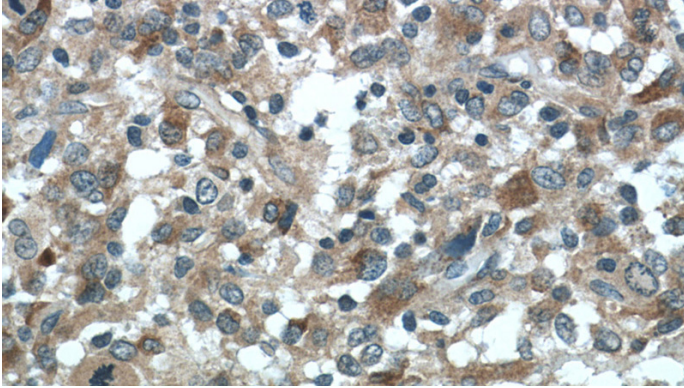
WB: 1:500-1:5000

# SPARCL1 antibody

Catalog Number: 115544

---

human gliomas tissue slide using Catalog No:115544(SPARCL1 Antibody) at dilution of 1:50 (under 10x lens)



Immunohistochemistry of paraffin-embedded human gliomas tissue slide using Catalog No:115544(SPARCL1 Antibody) at dilution of 1:50 (under 40x lens)