

Anti-Semaphorin 4D/SEMA4D/CD100 antibody



Catalog Number: 103544

Product name

Anti-Semaphorin 4D/SEMA4D/CD100 antibody

Immunogen

[Human Semaphorin 4D/SEMA4D/CD100 \(His Tag\) recombinant protein](#)

Specificity

Human SEMA4D / CD100

Antibody description

Rabbit polyclonal to Semaphorin 4D/SEMA4D/CD100

Preparation

Produced in rabbits immunized with purified, recombinant Human SEMA4D / CD100 (rh SEMA4D / CD100; Q92854-1; Met 1-Arg 734). SEMA4D / CD100 specific IgG was purified by Human SEMA4D / CD100 affinity chromatography.

Formulation

0.2 µm filtered solution in PBS with 5% trehalose

Storage

This antibody can be stored at 2°C-8°C for one month without detectable loss of activity. Antibody products are stable for twelve months from date of receipt when stored at -20°C to -80°C.

Preservative-Free.

Sodium azide is recommended to avoid contamination (final concentration 0.05%-0.1%). It

is toxic to cells and should be disposed of properly. Avoid repeated freeze-thaw cycles.

Clonality

Polyclonal

Ig Type

Rabbit IgG

Applications

ELISA, WB

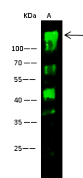
Dilutions

WB: 5-20 µg/mL

ELISA: 0.1-0.2 µg/mL

This antibody can be used at 0.1-0.2 µg/mL with the appropriate secondary reagents to detect Human SEMA4D. The detection limit for Human SEMA4D is approximately 0.00245 ng/well.

Validations



Items	Lanes	A
Sample (Membrane Lysate)		Jurkat
Sample Volume (µg/lane)		20
Gel		13% SDS-PAGE reducing gel
Recommended Concentration		5-10 µg/ml
Secondary Antibody		Dylight 800-labeled Antibody To Rabbit IgG (H+L), at 1:5000 dilution
Developed using Odyssey imaging system		
Explanation		Predicted band size: 96 kDa Observed band size: 140 kDa Additional bands at: 68 kDa, 45kD and 37kDa (We are unsure as to the identity of these extra bands. They are possible non-specific bindings).

Semaphorin 4D / SEMA4D / CD100 Antibody, Rabbit PAb, Antigen Affinity Purified, Western blot