

PPP1CC antibody

Catalog Number: 114144

Product name

PPP1CC antibody

WB: 1:200-1:2000

IP: 1:200-1:2000

Specificity

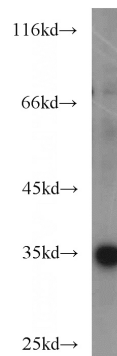
Human, Mouse, Rat; other species not tested.

IHC: 1:20-1:200

Antibody description

PPP1CC Rabbit Polyclonal antibody. Positive IP detected in HEK-293 cells. Positive WB detected in MCF7 cells, HEK-293 cells, HEK-293T cells, L02 cells, mouse brain tissue. Positive IHC detected in human pancreas cancer tissue. Observed molecular weight by Western-blot: 35 kDa

Validations



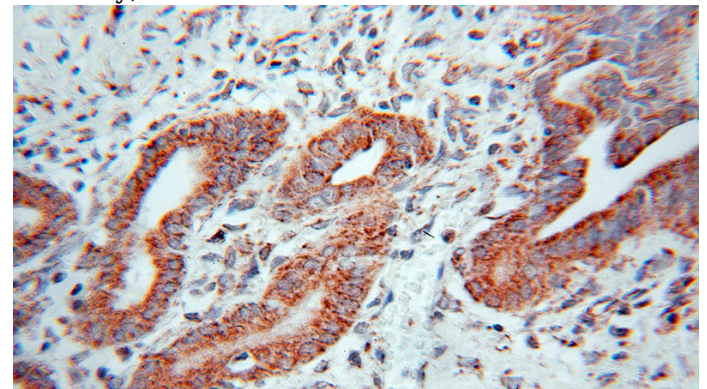
Preparation

This antibody was obtained by immunization of PPP1CC recombinant protein (Accession Number: NM_002710). Purification method: Antigen affinity purified.

MCF7 cells were subjected to SDS PAGE followed by western blot with Catalog No:114144(PPP1CC antibody) at dilution of 1:300

Formulation

PBS with 0.1% sodium azide and 50% glycerol pH 7.3.



Storage

Store at -20°C. DO NOT ALIQUOT

Clonality

Polyclonal

Immunohistochemical of paraffin-embedded human pancreas cancer using Catalog No:114144(PPP1CC antibody) at dilution of 1:100 (under 10x lens)

Ig Type

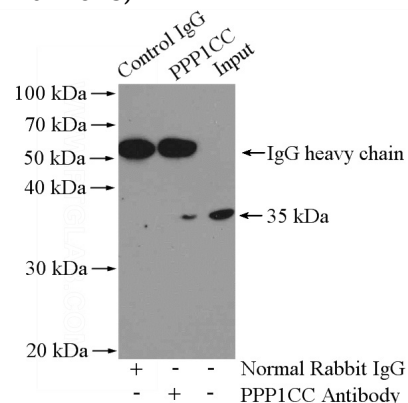
Rabbit IgG

Applications

ELISA, WB, IHC, IP

Dilutions

Recommended Dilution:



PPP1CC antibody



Catalog Number: 114144

IP Result of anti-PPP1CC (IP:Catalog No:114144,

4ug; Detection:Catalog No:114144 1:500) with
HEK-293 cells lysate 2000ug.