

Human S100B (Fc Tag) recombinant protein



Catalog Number: 504144

General Information

Gene Name Synonym

S-100 protein beta chain; S-100 protein subunit beta; S100 calcium-binding protein B

Protein Construction

A DNA sequence encoding the human S100B (NP_006263.1) (Ser 2-Glu 92) was expressed with the fused Fc region of human IgG1 at the N-terminus.

Organism

Human

Expression Host

Human Cells

QC Testing

Activity

1. Measured by its ability to bind mouse S100A1 in a functional ELISA.
2. Measured by its ability to bind TP53 in a functional ELISA.
3. Immobilized recombinant human Fc-S100B (Cat:504144) at 10 µg/mL (100 µl/well) can bind biotinylated human S100A1 (Cat:503506) with a linear range of 15.6-250 ng/mL.

Purity

> 95 % as determined by SDS-PAGE

Endotoxin

< 1.0 EU per µg of the protein as determined by the LAL method

Stability

Samples are stable for up to twelve months from date of receipt at -70°C

Predicted N terminal

Glu 20

Molecular Mass

The recombinant human Fc/S100B is a disulfide-linked homodimeric protein. The reduced monomer consists of 328 amino acids and has a predicted molecular mass of 37.2 kDa. As a result of glycosylation, the apparent molecular mass of rhFc/S100B monomer is approximately 40 kDa in SDS-PAGE under reducing conditions.

Formulation

Lyophilized from sterile PBS, pH 7.4

1. 5 % trehalose and mannitol are added as protectants before lyophilization.

2. Please contact us for any concerns or special requirements.

Usage Guide

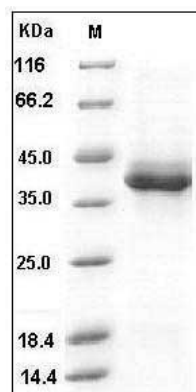
Storage

Store it under sterile conditions at -20°C to -80°C. It is recommended that the protein be aliquoted for optimal storage. Avoid repeated freeze-thaw cycles.

Reconstitution

Adding sterile water, prepare a stock solution of 0.25 mg/ml. Concentration is measured by UV-Vis.

SDS-PAGE



Human S100B (Fc Tag) recombinant protein



Catalog Number: 504144

Human S100B Protein (Fc Tag) SDS-PAGE