

# WT1 Polyclonal Antibody



Catalog Number: 163144

## Product name

WT1 Polyclonal Antibody

## Specificity

Human, Mouse, Rat

## Antibody description

Polyclonal antibody to WT1

## Preparation

Antigen: Recombinant protein of human WT1

## Formulation

PBS with 0.02% sodium azide, 50% glycerol, pH7.3.

## Storage

Store at -20°C. Avoid freeze / thaw cycles.

## Clonality

Polyclonal

## Ig Type

Rabbit IgG

## Applications

WB, IHC, IF

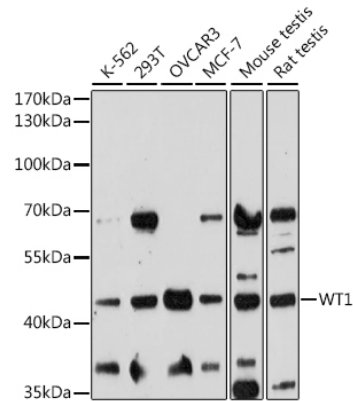
## Dilutions

WB 1:500 - 1:2000

IHC 1:50 - 1:200

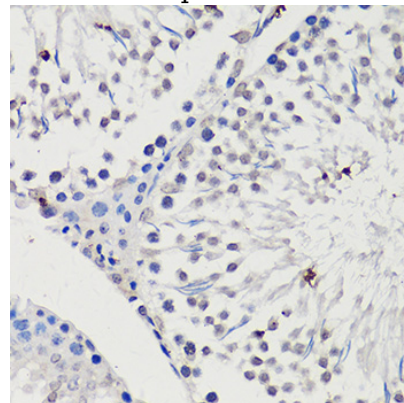
IF 1:50 - 1:200

## Validations



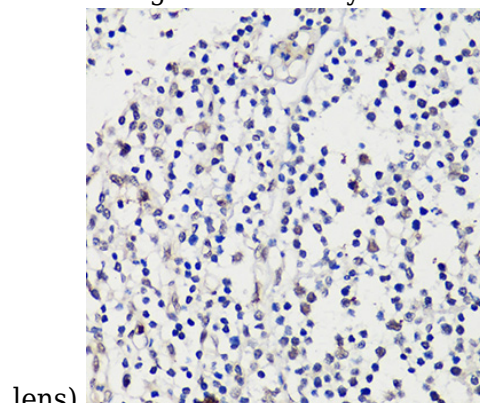
Western blot - WT1 Polyclonal Antibody

Western blot analysis of extracts of various cell lines, using WT1 antibody at 1:1000 dilution. Secondary antibody: HRP Goat Anti-Rabbit IgG (H+L) at 1:10000 dilution. Lysates/proteins: 25ug per lane. Blocking buffer: 3% nonfat dry milk in TBST. Detection: ECL Basic Kit. Exposure time: 3min.



Immunohistochemistry - WT1 Polyclonal Antibody

Immunohistochemistry of paraffin-embedded rat testis using WT1 antibody at dilution of 1:100 (40x



lens).

# WT1 Polyclonal Antibody



Catalog Number: 163144

---

Immunohistochemistry - WT1 Polyclonal Antibody

human tonsil using WT1 antibody at dilution of 1:100 (40x lens).

Immunohistochemistry of paraffin-embedded