

LARG antibody

Catalog Number: 112144

Product name

LARG antibody

IHC: 1:20-1:200

IF: 1:20-1:200

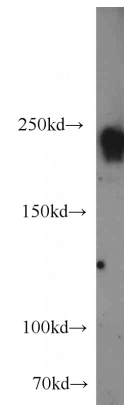
Specificity

Human; other species not tested.

Validations

Antibody description

LARG Rabbit Polyclonal antibody. Positive IHC detected in human testis. Positive IF detected in HepG2 cells. Positive WB detected in Jurkat cells, HeLa cells. Observed molecular weight by Western-blot: 220 kDa



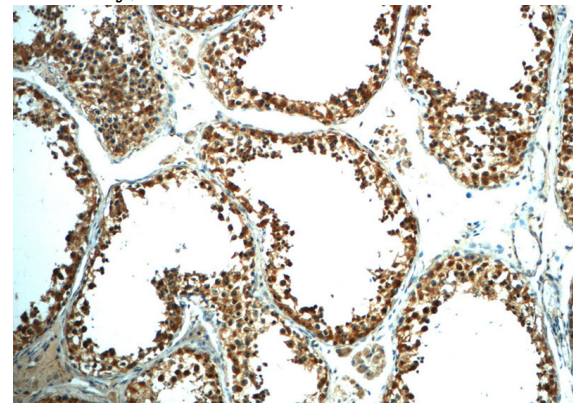
Preparation

This antibody was obtained by immunization of LARG recombinant protein (Accession Number: BC063117). Purification method: Antigen Affinity purified.

Jurkat cells were subjected to SDS PAGE followed by western blot with Catalog No:112144(LARG antibody) at dilution of 1:2000

Formulation

PBS with 0.02% sodium azide and 50% glycerol pH 7.3.



Storage

Store at -20°C. DO NOT ALIQUOT

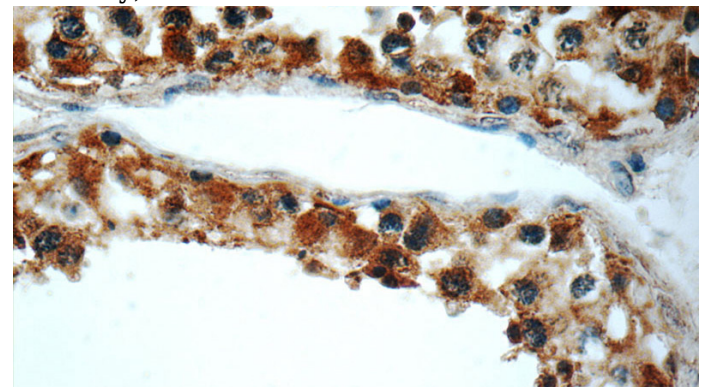
Clonality

Polyclonal

Immunohistochemistry of paraffin-embedded human testis slide using Catalog No:112144(LARG Antibody) at dilution of 1:50

Ig Type

Rabbit IgG



Applications

ELISA, WB, IF, IHC

Dilutions

Recommended Dilution:

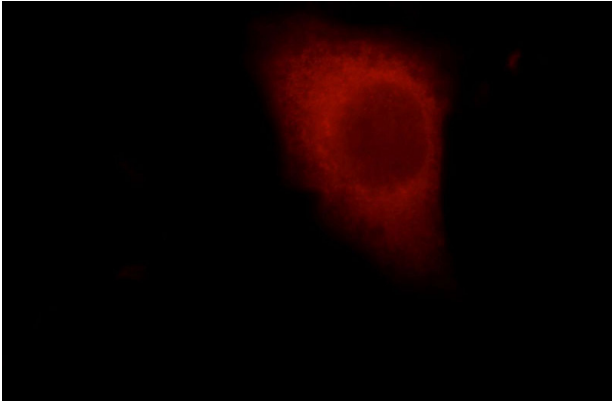
WB: 1:1000-1:10000

Immunohistochemistry of paraffin-embedded human testis slide using Catalog No:112144(LARG

LARG antibody

Catalog Number: 112144

Antibody) at dilution of 1:50



Immunofluorescent analysis of HepG2 cells, using ARHGEF12 antibody Catalog No:112144 at 1:50 dilution and Rhodamine-labeled goat anti-rabbit IgG (red).