

# Human LC3B / MAP1LC3B (His Tag) recombinant protein



Catalog Number: 501144

## General Information

### Gene Name Synonym

Autophagy-related protein LC3 B; Autophagy-related ubiquitin-like modifier LC3 B; MAP1 light chain 3-like protein 2; MAP1A/MAP1B light chain 3 B; Microtubule-associated protein 1 light chain 3 beta

### Protein Construction

A DNA sequence encoding the human MAP1LC3B (Q9GZQ8) (Met1-Val125) was expressed with a polyhistidine tag at the N-terminus.

### Organism

Human

### Expression Host

E. coli

## QC Testing

### Purity

> 90 % as determined by SDS-PAGE

### Endotoxin

Please contact us for more information.

### Stability

Samples are stable for up to twelve months from date of receipt at -70°C

### Predicted N terminal

His

### Molecular Mass

The recombinant human MAP1LC3B consists of 140 amino acids and predicts a molecular mass of 16.5 KDa. It migrates as an approximately 17 KDa band in SDS-PAGE under reducing conditions.

### Formulation

Lyophilized from sterile PBS, 20% glycerol, pH 7.4.

1. 5 % trehalose and mannitol are added as protectants before lyophilization.
2. Please contact us for any concerns or special requirements.

## Usage Guide

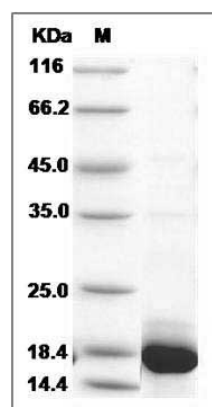
### Storage

Store it under sterile conditions at -20°C to -80°C. It is recommended that the protein be aliquoted for optimal storage. Avoid repeated freeze-thaw cycles.

### Reconstitution

Adding sterile water, prepare a stock solution of 0.25 mg/ml. Concentration is measured by UV-Vis.

### SDS-PAGE



Human LC3B / MAP1LC3B Protein (His Tag) SDS-PAGE