

Anti-phospho-Rad17 (Ser656) Rabbit antibody



Catalog Number: 167844

Product name

Monoclonal

Anti-phospho-Rad17 (Ser656) Rabbit antibody

Ig Type

Rabbit IgG

Specificity

Human

Applications

WB, IHC-P, ICC/IF

Antibody description

phospho-Rad17 (Ser656) Rabbit monoclonal antibody

Dilutions

WB: 1/1000-1/5000

Preparation

IHC: 1/501/50

Antigen: A synthetic phosphopeptide corresponding to residues surrounding Ser656 of human Rad17

Validations

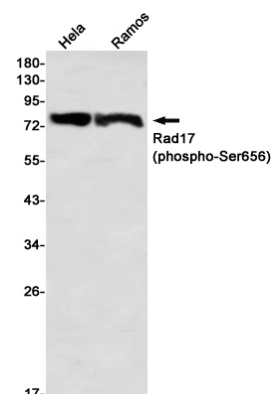
Formulation

50nM Tris-Glycine(pH 7.4), 0.15M NaCl, 40%Glycerol, 0.01% sodium azide and 0.05% BSA

Storage

Store at 4°C short term. Store at -20°C long term. Avoid freeze / thaw cycle.

Clonality



Western blot detection of Rad17 (phospho-Ser656) in HeLa,Ramos using Rad17 (phospho-Ser656) Rabbit mAb(1:1000 diluted)