

Product name

GALM antibody

Specificity

Human, Mouse, Rat; other species not tested.

Antibody description

GALM Rabbit Polyclonal antibody. Positive IHC detected in human heart tissue, human brain tissue, human spleen tissue. Positive WB detected in HeLa cells. Observed molecular weight by Western-blot: 38kd

Preparation

This antibody was obtained by immunization of GALM recombinant protein (Accession Number: NM_138801). Purification method: Antigen affinity purified.

Formulation

PBS with 0.02% sodium azide and 50% glycerol pH 7.3.

Storage

Store at -20°C. DO NOT ALIQUOT

Clonality

Polyclonal

Ig Type

Rabbit IgG

Applications

ELISA, WB, IHC

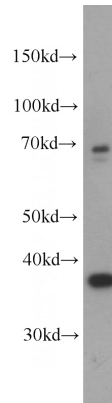
Dilutions

Recommended Dilution:

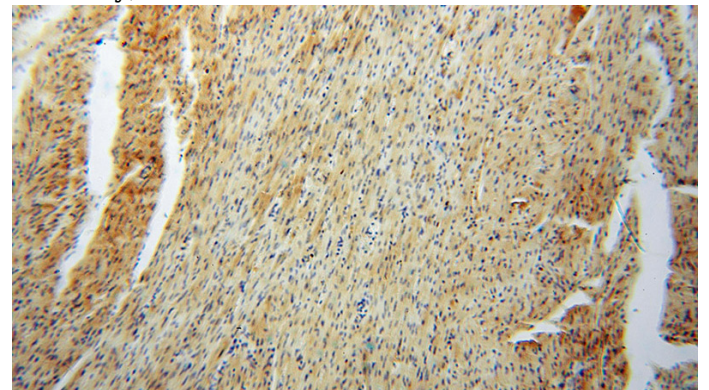
WB: 1:200-1:2000

IHC: 1:20-1:200

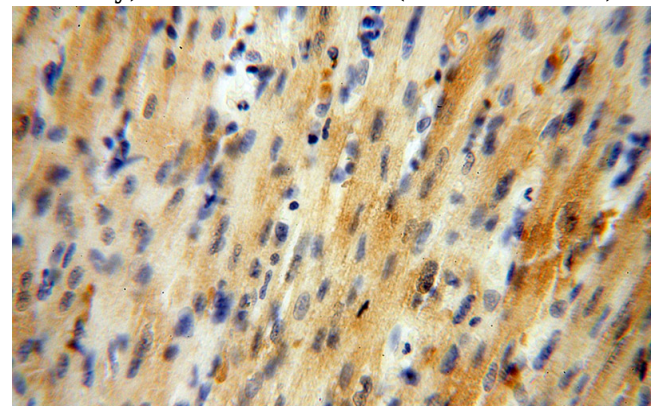
Validations



HeLa cells were subjected to SDS PAGE followed by western blot with Catalog No:110844(GALM antibody) at dilution of 1:600



Immunohistochemical of paraffin-embedded human heart using Catalog No:110844(GALM antibody) at dilution of 1:50 (under 10x lens)



Immunohistochemical of paraffin-embedded human heart using Catalog No:110844(GALM antibody) at dilution of 1:50 (under 40x lens)