

# SNAP23 antibody



Catalog Number: 115444

## Product name

SNAP23 antibody

WB: 1:500-1:5000

IP: 1:200-1:2000

## Specificity

Human, Mouse, Rat; other species not tested.

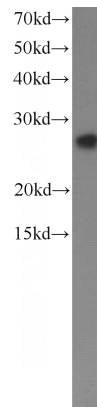
IHC: 1:20-1:200

IF: 1:20-1:200

## Antibody description

SNAP23 Rabbit Polyclonal antibody. Positive FC detected in HepG2 cells. Positive IHC detected in human prostate cancer tissue, human placenta tissue. Positive IF detected in HepG2 cells. Positive WB detected in HepG2 cells, HeLa cells. Positive IP detected in HeLa cells. Observed molecular weight by Western-blot: 23-25 kDa

## Validations



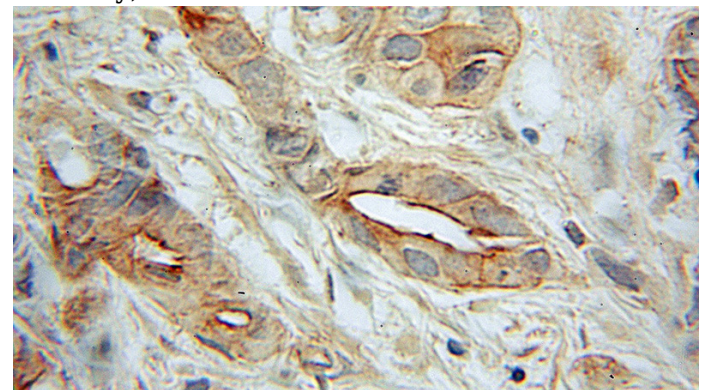
## Preparation

This antibody was obtained by immunization of SNAP23 recombinant protein (Accession Number: XM\_047433203). Purification method: Antigen affinity purified.

HepG2 cells were subjected to SDS PAGE followed by western blot with Catalog No:115444(SNAP23 antibody) at dilution of 1:1000

## Formulation

PBS with 0.1% sodium azide and 50% glycerol pH 7.3.



## Storage

Store at -20°C. DO NOT ALIQUOT

## Clonality

Polyclonal

## Ig Type

Rabbit IgG

## Applications

ELISA, WB, IHC, IF, FC, IP

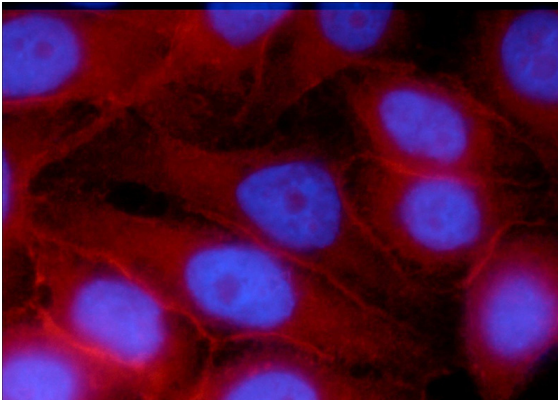
## Dilutions

Recommended Dilution:

Immunohistochemical of paraffin-embedded human prostate cancer using Catalog No:115444(SNAP23 antibody) at dilution of 1:50 (under 10x lens)

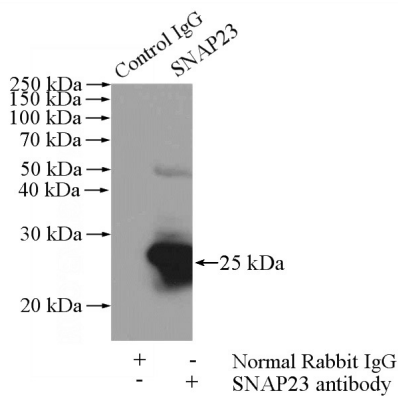
# SNAP23 antibody

Catalog Number: 115444

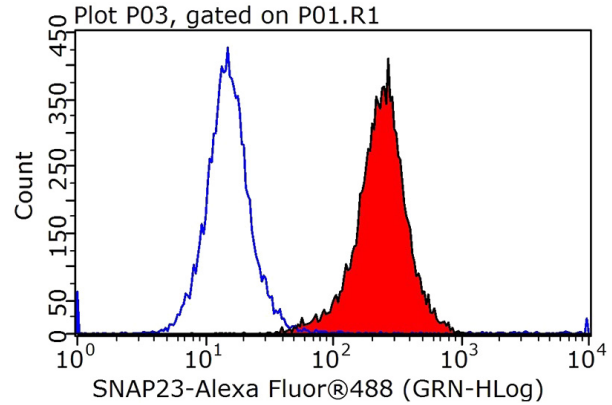


Immunofluorescent analysis of HepG2 cells, using SNAP23 antibody Catalog No:115444 at 1:50 dilution and Rhodamine-labeled goat anti-rabbit IgG (red). Blue pseudocolor = DAPI (fluorescent

DNA dye).



IP Result of anti-SNAP23 (IP:Catalog No:115444, 4ug; Detection:Catalog No:115444 1:500) with HeLa cells lysate 880ug.



1X10<sup>6</sup> HepG2 cells were stained with 0.2ug SNAP23 antibody (Catalog No:115444, red) and control antibody (blue). Fixed with 90% MeOH blocked with 3% BSA (30 min). Alexa Fluor 488-conjugated AffiniPure Goat Anti-Rabbit IgG(H+L) with dilution 1:1000.