

Human CCL23 / MIP 3 recombinant protein



Catalog Number: 500444

General Information

Gene Name Synonym

CK-beta-8; Macrophage inflammatory protein 3; Myeloid progenitor inhibitory factor 1; Small-inducible cytokine A23; CCL23(19-99); CCL23(22-99); CCL23(27-99); CCL23(30-99)

Protein Construction

A DNA sequence encoding the human CCL23 (AAB51134.1) (Arg22-Asn120) was expressed.

Organism

Human

Expression Host

E. coli

QC Testing

Purity

> 95 % as determined by SDS-PAGE

Endotoxin

Please contact us for more information.

Stability

Samples are stable for up to twelve months from date of receipt at -70°C

Predicted N terminal

Arg 22

Molecular Mass

The recombinant human CCL23 consists of 99 amino acids and predicts a molecular mass of 11.4 KDa. It migrates as an approximately 18 KDa band in SDS-PAGE under reducing conditions.

Formulation

Lyophilized from sterile PBS, pH 7.4.

1. 5 % trehalose and mannitol are added as protectants before lyophilization.
2. Please contact us for any concerns or special requirements.

Usage Guide

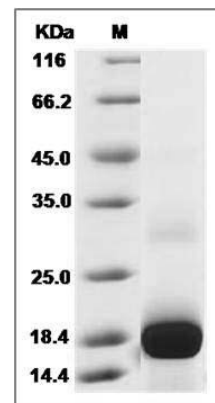
Storage

Store it under sterile conditions at -20°C to -80°C. It is recommended that the protein be aliquoted for optimal storage. Avoid repeated freeze-thaw cycles.

Reconstitution

Adding sterile water, prepare a stock solution of 0.25 mg/ml. Concentration is measured by UV-Vis.

SDS-PAGE



Human CCL23 / MIP 3 Protein SDS-PAGE