

Anti-Syndecan 3 Rabbit antibody



Catalog Number: 169044

Product name

Anti-Syndecan 3 Rabbit antibody

Ig Type

Rabbit IgG

Specificity

Human, Mouse, Rat

Applications

WB, IP

Antibody description

Syndecan 3 Rabbit monoclonal antibody

Dilutions

1:1000

Preparation

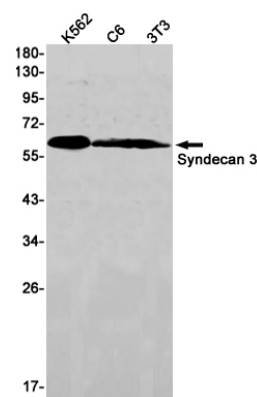
Antigen: A synthetic peptide of human Syndecan 3

1:20

Formulation

Supplied in 50nM Tris-Glycine(pH 7.4), 0.15M NaCl, 40%Glycerol, 0.01% sodium azide and 0.05% BSA.

Validations



Storage

Store at 4°C short term. Aliquot and store at -20°C long term. Avoid freeze / thaw cycle.

Clonality

Monoclonal

Western blot detection of Syndecan 3 in K562,C6,3T3 cell lysates using Syndecan 3 Rabbit mAb(1:1000 diluted).Predicted band size:46kDa.Observed band size:60kDa.