

# Anti-Cpn10 Rabbit antibody



Catalog Number: 167044

## Product name

Anti-Cpn10 Rabbit antibody

WB: 1/2000-1/10000

IHC: 1/50-1/200

## Specificity

Human, Mouse, Rat

IP: 1/20-1/50

## Antibody description

Cpn10 Rabbit polyclonal antibody

## Preparation

Antigen: A synthetic peptide of human Cpn10

## Formulation

Supplied in 50nM Tris-Glycine(pH 7.4), 0.15M NaCl, 40%Glycerol, 0.01% sodium azide and 0.05% BSA.

## Storage

Store at -20°C. Stable for 12 months from date of receipt.

## Clonality

Polyclonal

## Ig Type

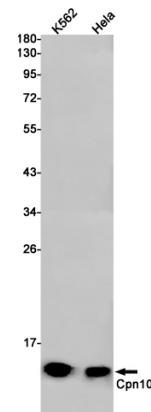
Rabbit IgG

## Applications

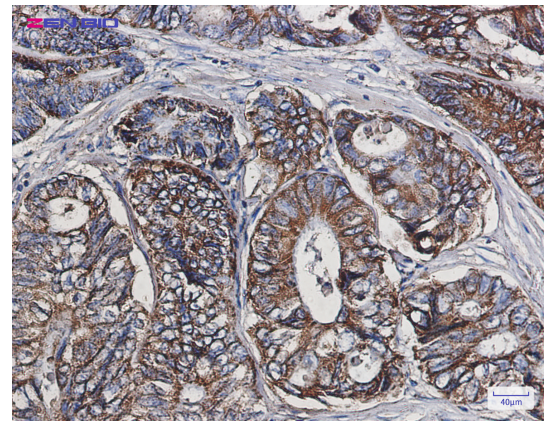
WB, IHC-P, IP

## Dilutions

## Validations



Western blot detection of Cpn10 in K562, HeLa cell lysates using Cpn10 Rabbit pAb(1:1000 diluted). Predicted band size: 11kDa. Observed band size: 11kDa.



Immunohistochemistry of Cpn10 in paraffin-embedded Human colon cancer tissue using Cpn10 Rabbit pAb at dilution 1/50