

POLR2I antibody



Catalog Number: 114044

Product name

POLR2I antibody

Specificity

Human, Mouse, Rat; other species not tested.

Antibody description

POLR2I Rabbit Polyclonal antibody. Positive WB detected in L02 cells, HepG2 cells. Positive IF detected in HepG2 cells. Observed molecular weight by Western-blot: 15 kDa

Preparation

This antibody was obtained by immunization of POLR2I recombinant protein (Accession Number: NM_006233). Purification method: Antigen affinity purified.

Formulation

PBS with 0.1% sodium azide and 50% glycerol pH 7.3.

Storage

Store at -20°C. DO NOT ALIQUOT

Clonality

Polyclonal

Ig Type

Rabbit IgG

Applications

ELISA, WB, IF

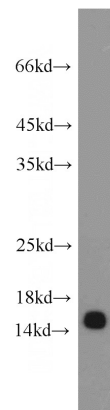
Dilutions

Recommended Dilution:

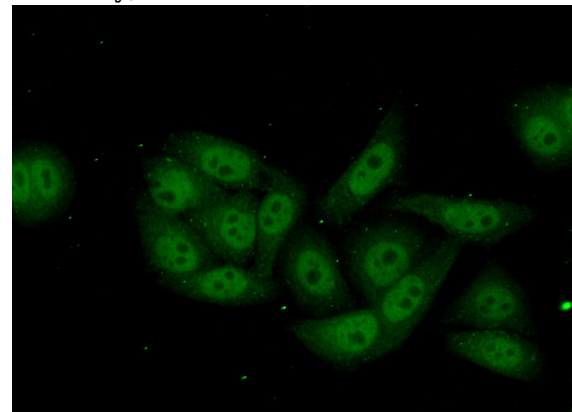
WB: 1:200-1:2000

IF: 1:50-1:500

Validations



L02 cells were subjected to SDS PAGE followed by western blot with Catalog No:114044(POLR2I antibody) at dilution of 1:500



Immunofluorescent analysis of (10% Formaldehyde) fixed HepG2 cells using Catalog No:114044(POLR2I Antibody) at dilution of 1:50 and Alexa Fluor 488-conjugated AffiniPure Goat Anti-Rabbit IgG(H+L)