

## General Information

### Gene Name Synonym

Proto-oncogene Neu; Proto-oncogene c-ErbB-2; p185erbB2

### Protein Construction

A DNA sequence encoding the mouse ERBB2 (P70424) extracellular domain (Met 1-Thr 653) was fused with the Fc region of human IgG1 at the C-terminus.

### Organism

Mouse

### Expression Host

Human Cells

## QC Testing

### Purity

> 90 % as determined by SDS-PAGE

### Endotoxin

< 1.0 EU per  $\mu\text{g}$  of the protein as determined by the LAL method

### Stability

Samples are stable for up to twelve months from date of receipt at  $-70^{\circ}\text{C}$

### Predicted N terminal

Thr 23

### Molecular Mass

The secreted recombinant mouse ERBB2/Fc is a

disulfide-linked homodimer. The reduced monomer comprises 872 amino acids and has a calculated molecular mass of 96.7 kDa. As a result of glycosylation, the apparent molecular mass of the recombinant protein is approximately 120-130 kDa in SDS-PAGE under reducing conditions.

### Formulation

Lyophilized from sterile PBS, pH 7.4

1. 5 % trehalose and mannitol are added as protectants before lyophilization.

2. Please contact us for any concerns or special requirements.

## Usage Guide

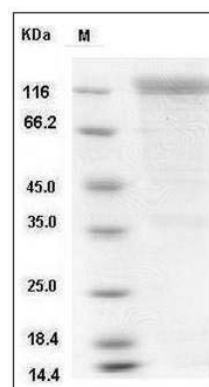
### Storage

Store it under sterile conditions at  $-20^{\circ}\text{C}$  to  $-80^{\circ}\text{C}$ . It is recommended that the protein be aliquoted for optimal storage. Avoid repeated freeze-thaw cycles.

### Reconstitution

Adding sterile water, prepare a stock solution of 0.25 mg/ml. Concentration is measured by UV-Vis.

### SDS-PAGE



Mouse HER2 / ErbB2 Protein (Fc Tag) SDS-PAGE