

Anti-PREX1 antibody



Catalog Number: 106734

Product name

Anti-PREX1 antibody

Specificity

Human PREX1

Antibody description

Rabbit polyclonal to PREX1

Preparation

Produced in rabbits immunized with a synthetic peptide corresponding to the center region of the human PREX1, and purified by antigen affinity chromatography.

Formulation

0.2 µm filtered solution in PBS

Storage

This antibody can be stored at 2°C-8°C for one month without detectable loss of activity. Antibody products are stable for twelve months from date of receipt when stored at -20°C to -80°C.

Preservative-Free.

Sodium azide is recommended to avoid contamination (final concentration 0.05%-0.1%). It is toxic to cells and should be disposed of properly. Avoid repeated freeze-thaw cycles.

Clonality

Polyclonal

Ig Type

Rabbit IgG

Applications

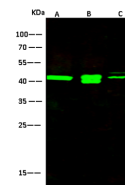
WB

Dilutions

WB: 5-10 µg/ml

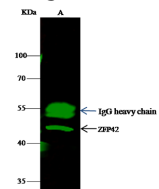
IP: 1-4 µg/mg of lysate

Validations



Items	Lanes	A	B	C
Sample (whole cell lysate)		Jurkat	293T	Raji
Sample Volume (µg/lane)		30	30	30
Gel		13% SDS-PAGE reducing gel		
Recommended Concentration		5-10 µg/ml		
Secondary Antibody		Dylight 800-labeled Antibody To Rabbit IgG (H+L), at 1:5000 dilution.		
Antibody		Developed using Odyssey imaging system.		
Explanation		Predicted band size : 35 kDa Observed band size : 42 kDa Additional bands at : 45 kDa and 40 kDa (We are unsure as to the identity of these extra bands.)		

PREX1 Antibody, Rabbit PAb, Antigen Affinity



Items	Lanes	A
Sample (whole cell lysate)		Raw264.7
Sample quantity		0.5 mg
IP antibody quantity		2 µg
Protein G agarose		15 µl of 50% Protein G Agarose
Gel		13% SDS-PAGE reducing gel
Primary antibody		KLH-SMCC-sinoA1174 antibody at 10 µg/ml
Secondary antibody		Dylight 800-labeled antibody to rabbit IgG (H+L), at 1:5000 dilution.

Purified, Western blot

PREX1 Antibody, Rabbit PAb, Antigen Affinity

Purified, Immunoprecipitation