

# Anti-CNTF/Ciliary Neurotrophic Factor antibody



Catalog Number: 103734

## Product name

Anti-CNTF/Ciliary Neurotrophic Factor antibody

## Immunogen

[Rat CNTF/Ciliary Neurotrophic Factor recombinant protein](#)

## Specificity

Rat CNTF

## Antibody description

Rabbit polyclonal to CNTF/Ciliary Neurotrophic Factor

## Preparation

Produced in rabbits immunized with purified, recombinant Rat CNTF (rR CNTF; P20294; Met 1-Met 200). CNTF specific IgG was purified by Rat CNTF affinity chromatography.

## Formulation

0.2 µm filtered solution in PBS with 5% trehalose

## Storage

This antibody can be stored at 2°C-8°C for one month without detectable loss of activity. Antibody products are stable for twelve months from date of receipt when stored at -20°C to -80°C.

Preservative-Free.

Sodium azide is recommended to avoid contamination (final concentration 0.05%-0.1%). It is toxic to cells and should be disposed of

properly. Avoid repeated freeze-thaw cycles.

## Clonality

Polyclonal

## Ig Type

Rabbit IgG

## Applications

ELISA, WB

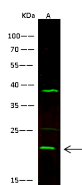
## Dilutions

WB: 10-20 µg/mL

ELISA: 0.1-0.2 µg/mL

This antibody can be used at 0.1-0.2 µg/mL with the appropriate secondary reagents to detect Rat CNTF. The detection limit for Rat CNTF is approximately 0.00975 ng/well.

## Validations



Items	Lanes	A
Sample (whole cell lysate)		Z93T
Sample Volume (µg/lane)		30
Gel		13%SDS-PAGE reducing gel
Recommended Concentration		10-20 µg/ml
Secondary Antibody		Dylight 800-labeled Antibody To Rabbit IgG (H+L), at 1:5000 dilution.
Developed using Odyssey imaging system.		
Explanation		Predicted band size: 23 kDa Observed band size: 23 kDa Additional bands at: 38 kDa (We are unsure as to the identity of these extra bands. They are possible non-specific bindings)

CNTF Antibody, Rabbit PAb, Antigen Affinity Purified, Western blot