

# CLASP2 antibody



Catalog Number: 109334

## Product name

CLASP2 antibody

## Specificity

Human, Mouse; other species not tested.

## Antibody description

CLASP2 Rabbit Polyclonal antibody. Positive WB detected in human brain tissue, HEK-293 cells. Positive IF detected in HepG2 cells. Observed molecular weight by Western-blot: 140-160 kDa

## Preparation

This antibody was obtained by immunization of CLASP2 recombinant protein (Accession Number: BC029035). Purification method: Antigen affinity purified.

## Formulation

PBS with 0.02% sodium azide and 50% glycerol pH 7.3.

## Storage

Store at -20°C. DO NOT ALIQUOT

## Clonality

Polyclonal

## Ig Type

Rabbit IgG

## Applications

ELISA, WB, IF

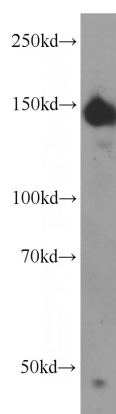
## Dilutions

Recommended Dilution:

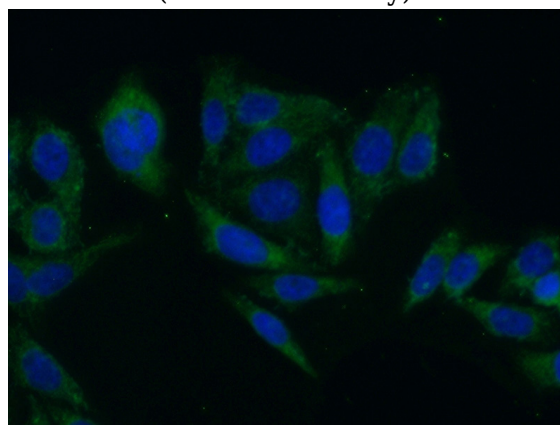
WB: 1:500-1:5000

IF: 1:50-1:500

## Validations



human brain tissue were subjected to SDS PAGE followed by western blot with Catalog No:109334(CLASP2 antibody) at dilution of 1:500



Immunofluorescent analysis of HepG2 cells using Catalog No:109334(CLASP2 Antibody) at dilution of 1:50 and Alexa Fluor 488-conjugated AffiniPure Goat Anti-Rabbit IgG(H+L)