

POP4 Polyclonal Antibody



Catalog Number: 164334

Product name

POP4 Polyclonal Antibody

Specificity

Human, Mouse, Rat

Antibody description

Polyclonal antibody to POP4

Preparation

Antigen: Recombinant fusion protein containing a sequence corresponding to amino acids 1-220 of human POP4 (NP_006618.1).

Formulation

PBS with 0.02% sodium azide, 50% glycerol, pH7.3.

Storage

Store at -20°C. Avoid freeze / thaw cycles.

Clonality

Polyclonal

Ig Type

Rabbit IgG

Applications

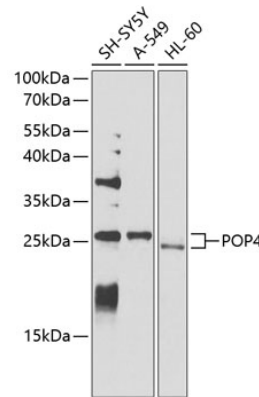
WB, IHC

Dilutions

WB 1:200 - 1:2000

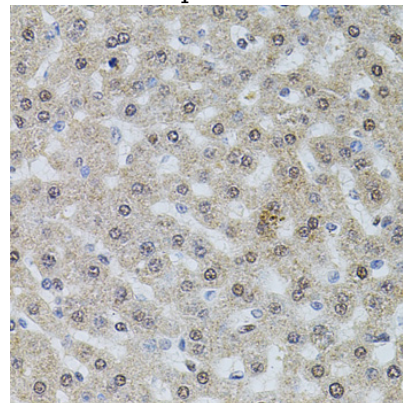
IHC 1:50 - 1:200

Validations



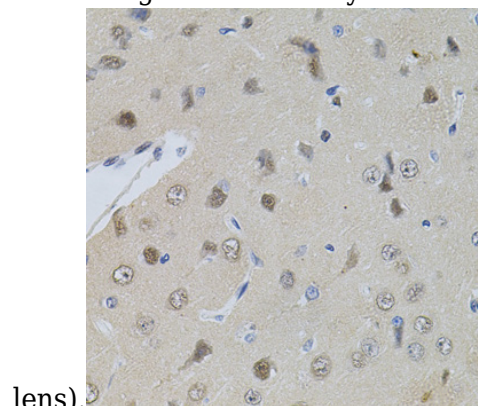
Western blot - POP4 Polyclonal Antibody

Western blot analysis of extracts of various cell lines, using POP4 antibody at 1:1000 dilution. Secondary antibody: HRP Goat Anti-Rabbit IgG (H+L) at 1:10000 dilution. Lysates/proteins: 25ug per lane. Blocking buffer: 3% nonfat dry milk in TBST. Detection: ECL Basic Kit. Exposure time: 90s.



Immunohistochemistry - POP4 Polyclonal Antibody

Immunohistochemistry of paraffin-embedded rat liver using POP4 antibody at dilution of 1:100 (40x



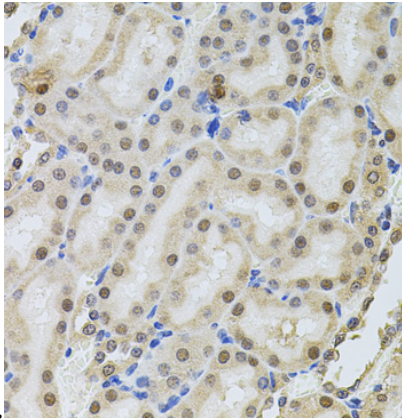
POP4 Polyclonal Antibody



Catalog Number: 164334

Immunohistochemistry - POP4 Polyclonal Antibody

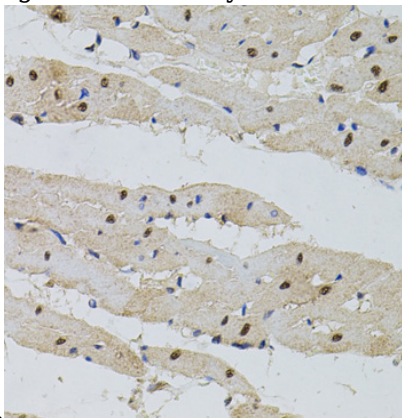
Immunohistochemistry of paraffin-embedded rat brain using POP4 antibody at dilution of 1:100



(40x lens).

Immunohistochemistry - POP4 Polyclonal Antibody

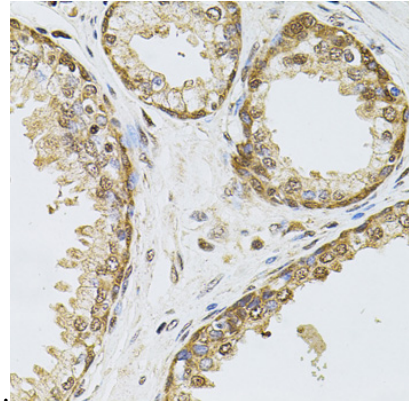
Immunohistochemistry of paraffin-embedded rat kidney using POP4 antibody at dilution of 1:100



(40x lens).

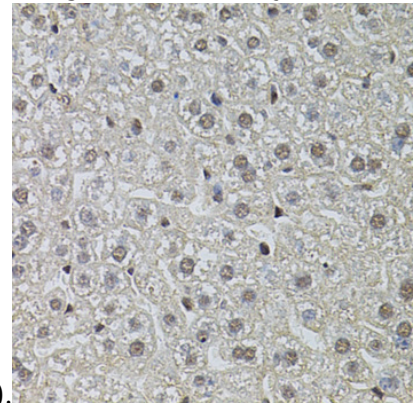
Immunohistochemistry - POP4 Polyclonal Antibody

Immunohistochemistry of paraffin-embedded rat heart using POP4 antibody at dilution of 1:100



(40x lens).

Immunohistochemistry - POP4 Polyclonal Antibody
Immunohistochemistry of paraffin-embedded human prostate using POP4 antibody at dilution of



1:100 (40x lens).

Immunohistochemistry - POP4 Polyclonal Antibody

Immunohistochemistry of paraffin-embedded mouse liver using POP4 antibody at dilution of 1:100 (40x lens).