

# Mouse EphB1/Eph Receptor B1 (His Tag) recombinant protein



Catalog Number: 502334

## General Information

### Protein Construction

A DNA sequence encoding the mouse EPHB1 (Q8CBF3-1) extracellular domain (Met 1-Leu 539) was expressed, with a polyhistidine tag at the C-terminus.

### Organism

Mouse

### Expression Host

Human Cells

## QC Testing

### Activity

Immobilized mouse EPHB1-His at 10 µg/ml (100 µl/well) can bind mouse EFNB1-Fc (Cat:503291), The EC<sub>50</sub> of mouse EFNB1-Fc (Cat:503291) is 0.04-0.08 µg/ml.

### Purity

> 98 % as determined by SDS-PAGE

### Endotoxin

< 1.0 EU per µg of the protein as determined by the LAL method

### Stability

Samples are stable for up to twelve months from date of receipt at -70°C

### Predicted N terminal

Met 18

### Molecular Mass

The secreted recombinant mouse EPHB1 consists of 533 amino acids and has a predicted molecular mass of 59.6 kDa. In SDS-PAGE under reducing conditions, the apparent molecular mass of rm EPHB1 is approximately 64 kDa due to glycosylation.

### Formulation

Lyophilized from sterile PBS, pH 7.4

1. 5 % trehalose and mannitol are added as protectants before lyophilization.

2. Please contact us for any concerns or special requirements.

## Usage Guide

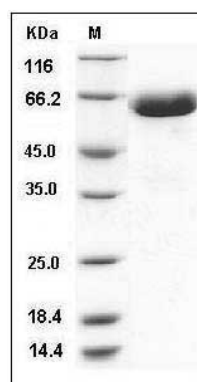
### Storage

Store it under sterile conditions at -20°C to -80°C. It is recommended that the protein be aliquoted for optimal storage. Avoid repeated freeze-thaw cycles.

### Reconstitution

Adding sterile water, prepare a stock solution of 0.25 mg/ml. Concentration is measured by UV-Vis.

### SDS-PAGE



Mouse EphB1 / EPHT2 Protein (His Tag) SDS-PAGE