

# FCER1G Polyclonal Antibody



Catalog Number: 161334

## Product name

FCER1G Polyclonal Antibody

## Specificity

Human, Mouse, Rat

## Antibody description

Polyclonal antibody to FCER1G

## Preparation

Antigen: Recombinant fusion protein containing a sequence corresponding to amino acids 19-86 of human FCER1G (NP\_004097.1).

## Formulation

PBS with 0.02% sodium azide, 50% glycerol, pH7.3.

## Storage

Store at -20°C. Avoid freeze / thaw cycles.

## Clonality

Polyclonal

## Ig Type

Rabbit IgG

## Applications

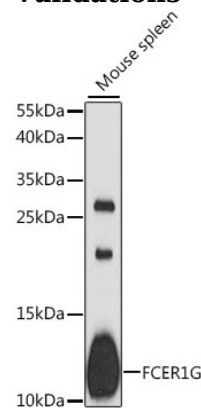
WB, IHC

## Dilutions

WB 1:1000 - 1:2000

IHC 1:50 - 1:200

## Validations



Western blot - FCER1G Polyclonal Antibody

Western blot analysis of extracts of mouse spleen, using FCER1G antibody at 1:1000 dilution. Secondary antibody: HRP Goat Anti-Rabbit IgG (H+L) at 1:10000 dilution. Lysates/proteins: 25ug per lane. Blocking buffer: 3% nonfat dry milk in TBST. Detection: ECL Basic Kit. Exposure time: 90s.