

ARHGEF9 Polyclonal Antibody



Catalog Number: 165634

Product name

ARHGEF9 Polyclonal Antibody

Specificity

Human, Mouse, Rat

Antibody description

Polyclonal antibody to ARHGEF9

Preparation

Antigen: Recombinant fusion protein containing a sequence corresponding to amino acids 307-516 of human ARHGEF9 (NP_056000.1).

Formulation

PBS with 0.02% sodium azide, 50% glycerol, pH7.3.

Storage

Store at -20°C. Avoid freeze / thaw cycles.

Clonality

Polyclonal

Ig Type

Rabbit IgG

Applications

WB, IHC, IF

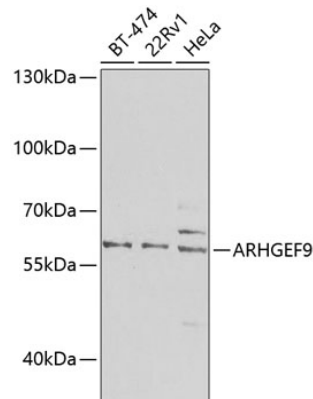
Dilutions

WB 1:500 - 1:2000

IHC 1:50 - 1:200

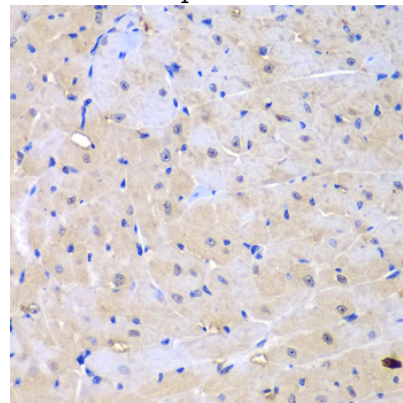
IF 1:50 - 1:100

Validations



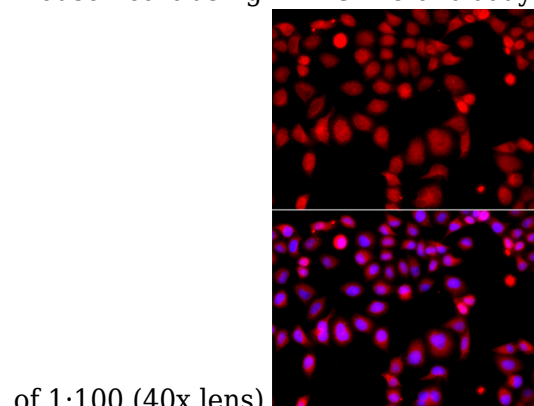
Western blot - ARHGEF9 Polyclonal Antibody

Western blot analysis of extracts of various cell lines, using ARHGEF9 antibody at 1:1000 dilution. Secondary antibody: HRP Goat Anti-Rabbit IgG (H+L) at 1:10000 dilution. Lysates/proteins: 25ug per lane. Blocking buffer: 3% nonfat dry milk in TBST. Detection: ECL Basic Kit. Exposure time: 90s.



Immunohistochemistry - ARHGEF9 Polyclonal Antibody

Immunohistochemistry of paraffin-embedded mouse heart using ARHGEF9 antibody at dilution



of 1:100 (40x lens).

ARHGEF9 Polyclonal Antibody



Catalog Number: 165634

Immunofluorescence - ARHGEF9 Polyclonal Antibody

Immunofluorescence analysis of A549 cells using ARHGEF9 antibody . Blue: DAPI for nuclear staining.