

TRAF6 antibody



Catalog Number: 116234

Product name

TRAF6 antibody

Specificity

Human, Mouse, Rat; other species not tested.

Antibody description

TRAF6 Rabbit Polyclonal antibody. Positive IHC detected in human liver tissue. Positive IF detected in Hela cells. Positive WB detected in A431 cells, Apoptosised HeLa cells, HeLa cells, HT-1080 cells, human heart tissue, Jurkat cells, K-562 cells, mouse thymus tissue, rat heart tissue. Observed molecular weight by Western-blot: 60 kDa

Preparation

This antibody was obtained by immunization of TRAF6 recombinant protein (Accession Number: NM_004620). Purification method: Antigen affinity purified.

Formulation

PBS with 0.02% sodium azide and 50% glycerol pH 7.3.

Storage

Store at -20°C. DO NOT ALIQUOT

Clonality

Polyclonal

Ig Type

Rabbit IgG

Applications

ELISA, WB, IHC, IF

Dilutions

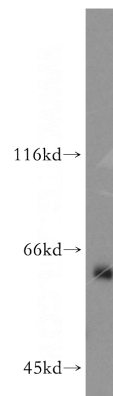
Recommended Dilution:

WB: 1:200-1:1000

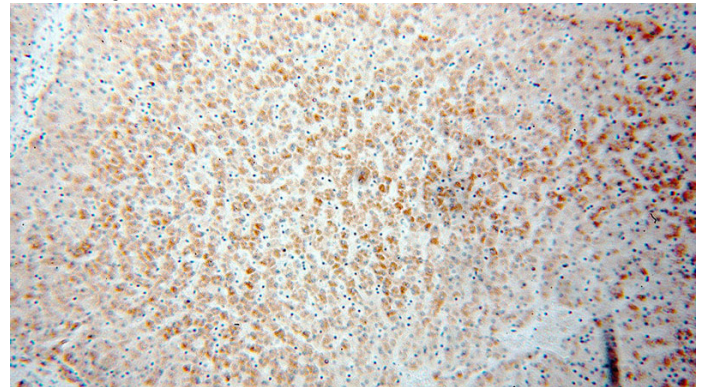
IHC: 1:20-1:200

IF: 1:10-1:100

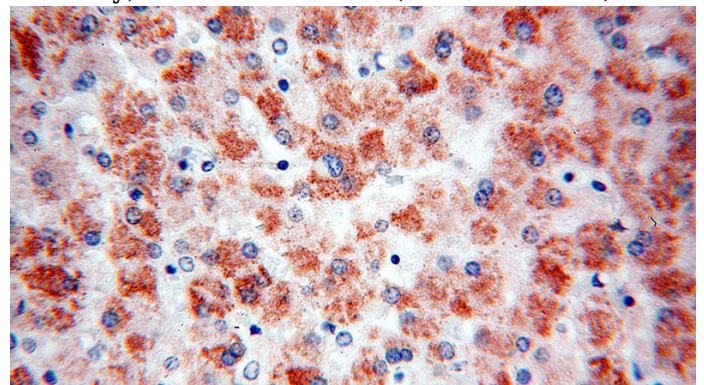
Validations



A431 cells were subjected to SDS PAGE followed by western blot with Catalog No:116234(TRAF6 antibody) at dilution of 1:300



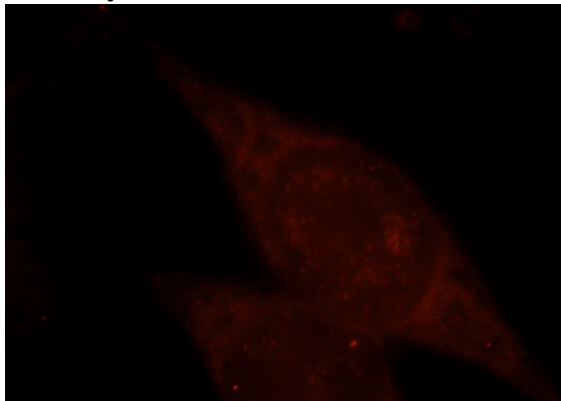
Immunohistochemical of paraffin-embedded human liver using Catalog No:116234(TRAF6 antibody) at dilution of 1:50 (under 10x lens)



TRAF6 antibody

Catalog Number: 116234

Immunohistochemical of paraffin-embedded human liver using Catalog No:116234(TRAF6 antibody) at dilution of 1:50 (under 40x lens)



Immunofluorescent analysis of Hela cells, using TRAF6 antibody Catalog No:116234 at 1:25 dilution and Rhodamine-labeled goat anti-rabbit IgG (red).