

Anti-METTL1 antibody



Catalog Number: 103234

Product name

Anti-METTL1 antibody

Immunogen

[Human METTL1 \(His Tag\) recombinant protein](#)

Specificity

Human METTL1

No cross-reactivity in ELISA with E.coli cell lysate

Antibody description

Mouse monoclonal to METTL1

Preparation

This antibody was produced from a hybridoma resulting from the fusion of a mouse myeloma with B cells obtained from a mouse immunized with purified, recombinant Human METTL1 (rh METTL1; NP_005362.3; Asp 32-Gln 265). The IgG fraction of the cell culture supernatant was purified by Protein A affinity chromatography.

Formulation

0.2 µm filtered solution in PBS with 5% trehalose

Storage

This antibody can be stored at 2°C-8°C for one month without detectable loss of activity. Antibody products are stable for twelve months from date of receipt when stored at -20°C to -80°C.

Preservative-Free.

Sodium azide is recommended to avoid contamination (final concentration 0.05%-0.1%). It is toxic to cells and should be disposed of properly. Avoid repeated freeze-thaw cycles.

Clonality

Monoclonal

Ig Type

Mouse IgG1

Applications

ELISA, WB, IP

Dilutions

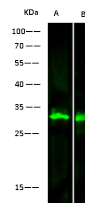
WB: 5-10 µg/ml

ELISA: 0.5-1 µg/mL

This antibody can be used at 0.5-1 µg/mL with the appropriate secondary reagents to detect Human METTL1. The detection limit for Human METTL1 is approximately 0.078 ng/well.

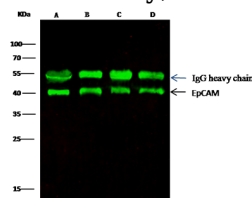
IP: 4-6 µg/mg of lysate

Validations



Lanes	A	B
Items		
Sample (whole cell lysate)	293T	Jurkat
Sample Volume (µg/lane)	30	
Gel	13%SDS-PAGE reducing gel	
Recommended Concentration	5-10 µg/ml	
Secondary Antibody	Dylight 800 labeled Antibody To Mouse IgG (H+L), at 1:2500 dilution.	
Developed using Odyssey imaging system.		
Explanation	Predicted band size : 31 kDa Observed band size : 31 kDa	

METTL1 Antibody, Mouse MAb, Western blot



Lanes	A	B	C	D
Items				
Sample (whole cell lysate)	MCF7	A431	HepG2	Caco-2
Sample quantity	0.5 mg			
IP antibody quantity	2 µg			
Protein G agarose	15 µl of 50% Protein G Agarose			
Gel	13%SDS-PAGE reducing gel			
Primary antibody	EpCAM antibody at 1 µg/ml [Cat# 10694-R028]			
Secondary antibody	Dylight 800-labeled antibody to rabbit IgG (H+L), at 1:5000 dilution.			

METTL1 Antibody, Mouse MAb, Immunoprecipitation