

# Human TPL2/MAP3K8/MEKK8 (GST Tag) recombinant protein



Catalog Number: 502234

## General Information

### Gene Name Synonym

Cancer Osaka thyroid oncogene; Proto-oncogene c-Cot; Serine/threonine-protein kinase cot; Tumor progression locus 2

### Protein Construction

A DNA sequence encoding the human MAP3K8 isoform 1 (P41279-1) (Met 30-Arg 397) was fused with the GST tag at the N-terminus.

### Organism

Human

### Expression Host

Baculovirus-Insect Cells

## QC Testing

### Activity

Kinase activity untested

### Purity

> 91 % as determined by SDS-PAGE

### Endotoxin

< 1.0 EU per  $\mu\text{g}$  of the protein as determined by the LAL method

### Stability

Samples are stable for up to twelve months from date of receipt at  $-70^{\circ}\text{C}$

### Predicted N terminal

Met

## Molecular Mass

The recombinant human MAP3K8/GST chimera consists of 592 amino acids and has a predicted molecular mass of 68 kDa as estimated in SDS-PAGE under reducing conditions.

## Formulation

Supplied as sterile 50mM Tris, 100mM NaCl, 0.5mM PMSF, 0.5mM GSH, pH 8.0

1. 5 % trehalose and mannitol are added as protectants before lyophilization.
2. Please contact us for any concerns or special requirements.

## Usage Guide

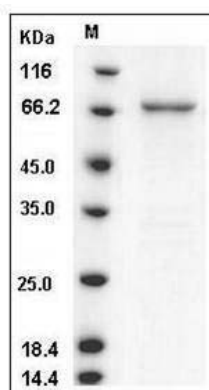
### Storage

Store it under sterile conditions at  $-20^{\circ}\text{C}$  to  $-80^{\circ}\text{C}$ . It is recommended that the protein be aliquoted for optimal storage. Avoid repeated freeze-thaw cycles.

### Reconstitution

Adding sterile water, prepare a stock solution of 0.25 mg/ml. Concentration is measured by UV-Vis.

## SDS-PAGE



Human TPL2 / MAP3K8 / MEKK8 Protein (GST Tag) SDS-PAGE