

GTF2H2C antibody



Catalog Number: 111234

Product name

GTF2H2C antibody

Specificity

Human, Mouse, Rat; other species not tested.

Antibody description

GTF2H2C Rabbit Polyclonal antibody. Positive WB detected in HepG2 cells, HeLa cells, K-562 cells, MCF7 cells. Observed molecular weight by Western-blot: 44 kDa

Preparation

This antibody was obtained by immunization of GTF2H2C recombinant protein (Accession Number: NM_001376001). Purification method: Antigen affinity purified.

Formulation

PBS with 0.02% sodium azide and 50% glycerol pH 7.3.

Storage

Store at -20°C. DO NOT ALIQUOT

Clonality

Polyclonal

Ig Type

Rabbit IgG

Applications

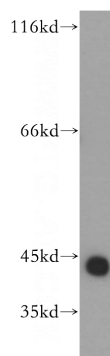
ELISA, WB

Dilutions

Recommended Dilution:

WB: 1:200-1:2000

Validations



HepG2 cells were subjected to SDS PAGE followed by western blot with Catalog No:111234(GTF2H2C antibody) at dilution of 1:500